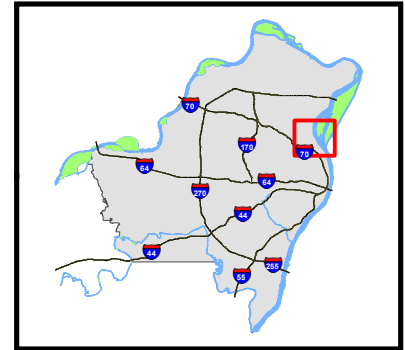
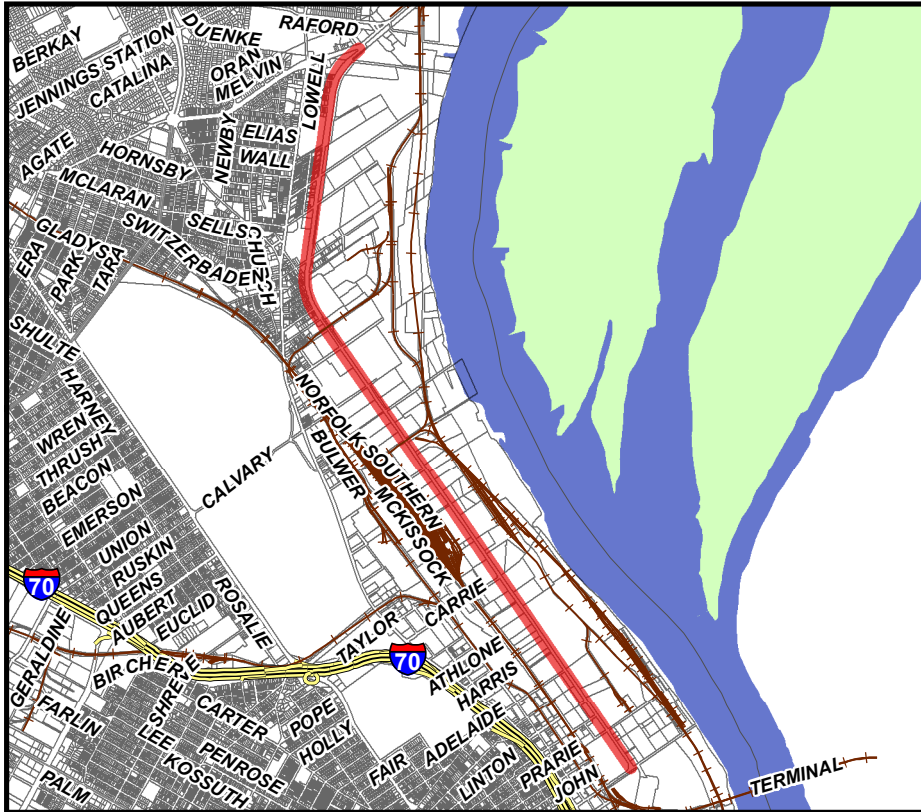


HALL STREET FROM RIVERVIEW TO GRAND STORM SEWERS



FISCAL YEAR: 2019

PROJECT NO: 10070

PROJECT TYPE:
Stormwater

TASK NO:
11

TASK NAME:
Design Services

Description of Problem/Issue

STREET FLOODING ALONG HALL STREET FROM RIVERVIEW TO GRAND.

BUDGET:
\$1,900,000

FUND:
5120 - Districtwide
Stormwater Fund

Scope of Project

PROVIDE FINANCIAL ASSISTANCE TO THE CITY OF ST. LOUIS FOR THE CONSTRUCTION OF STORM SEWERS ALONG HALL STREET.

MUNICIPALITY:
St. Louis City

MAJOR SERVICE AREA:
Bissell

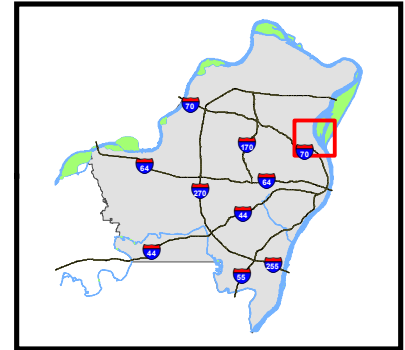
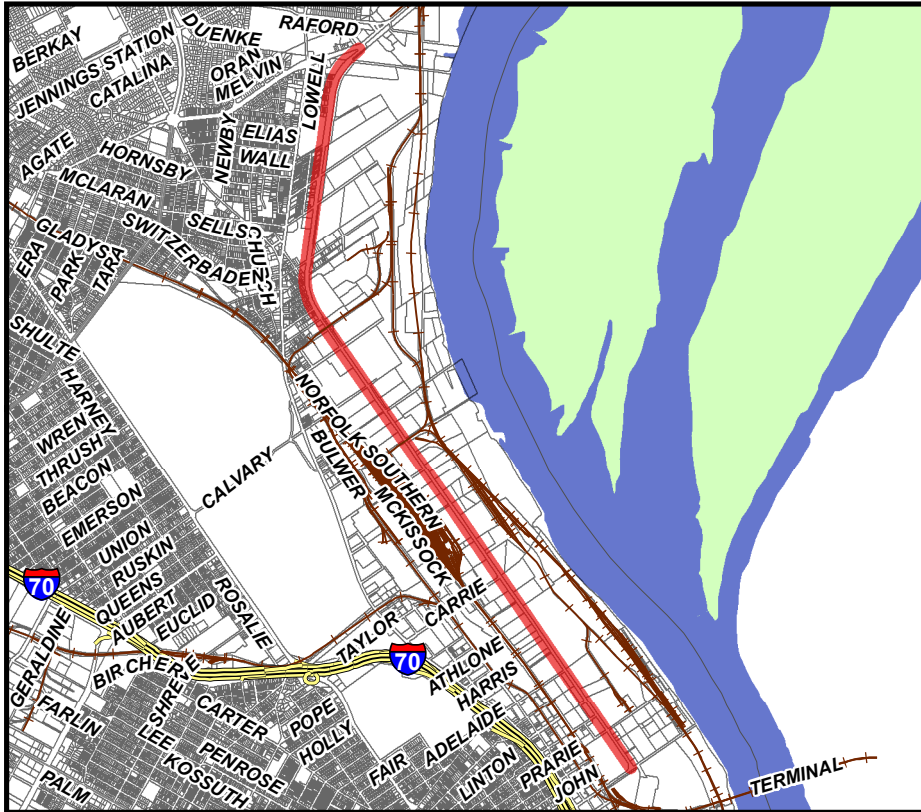
Comments/Remarks

PROJECT IS EXPECTED TO BE IMPLEMENTED BY THE CITY OF ST. LOUIS. \$800,000 IS FOR REIMBURSEMENT OF CONSTRUCTION COSTS FROM GRAND TO ADELAIDE.

WATERSHED:
Various

EXPENSE TYPE:
Capital

HALL STREET FROM RIVERVIEW TO GRAND STORM SEWERS



FISCAL YEAR: 2019

PROJECT NO: 10070

PROJECT TYPE:
Stormwater

TASK NO:
15

TASK NAME:
Construction

Description of Problem/Issue

STREET FLOODING ALONG HALL STREET FROM RIVERVIEW TO GRAND.

BUDGET:

\$800,000

FUND:

5120 - Districtwide
Stormwater Fund

Scope of Project

PROVIDE FINANCIAL ASSISTANCE TO THE CITY OF ST. LOUIS FOR THE CONSTRUCTION OF STORM SEWERS ALONG HALL STREET.

MUNICIPALITY:

St. Louis City

MAJOR SERVICE AREA:

Bissell

Comments/Remarks

PROJECT IS EXPECTED TO BE IMPLEMENTED BY THE CITY OF ST. LOUIS. \$800,000 IS FOR REIMBURSEMENT OF CONSTRUCTION COSTS FROM GRAND TO ADELAIDE.

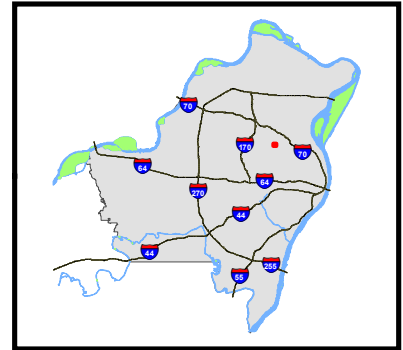
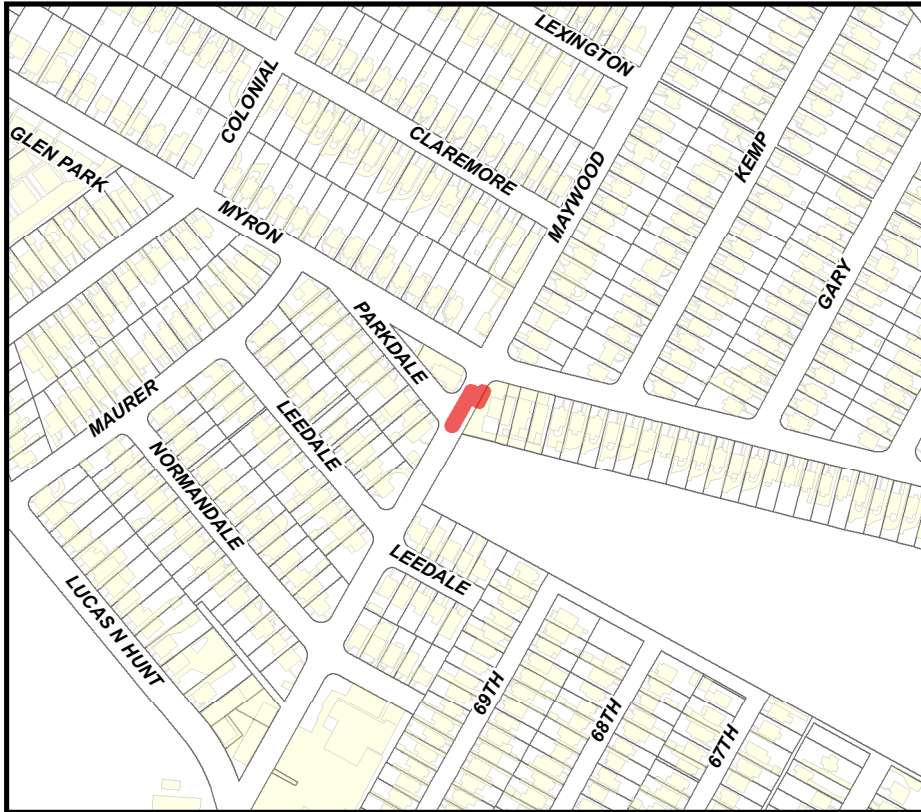
WATERSHED:

Various

EXPENSE TYPE:

Capital

MAYWOOD-MYRON STORM SEWER



FISCAL YEAR: 2019

PROJECT NO: 11637

PROJECT TYPE:
Stormwater

TASK NO:
15

TASK NAME:
Construction

Description of Problem/Issue

FREQUENT STRUCTURE FLOODING.

BUDGET:

\$200,000

FUND:

5120 - Districtwide
Stormwater Fund

Scope of Project

CONSTRUCT 70 FEET OF 30-INCH STORM SEWER, 15 FEET OF 24-INCH COMBINED SEWER, AND TRIPLE INLET.

MUNICIPALITY:

Velda Village Hills

MAJOR SERVICE AREA:

Bissell

Comments/Remarks

WATERSHED:

Harlem

EXPENSE TYPE:

Capital