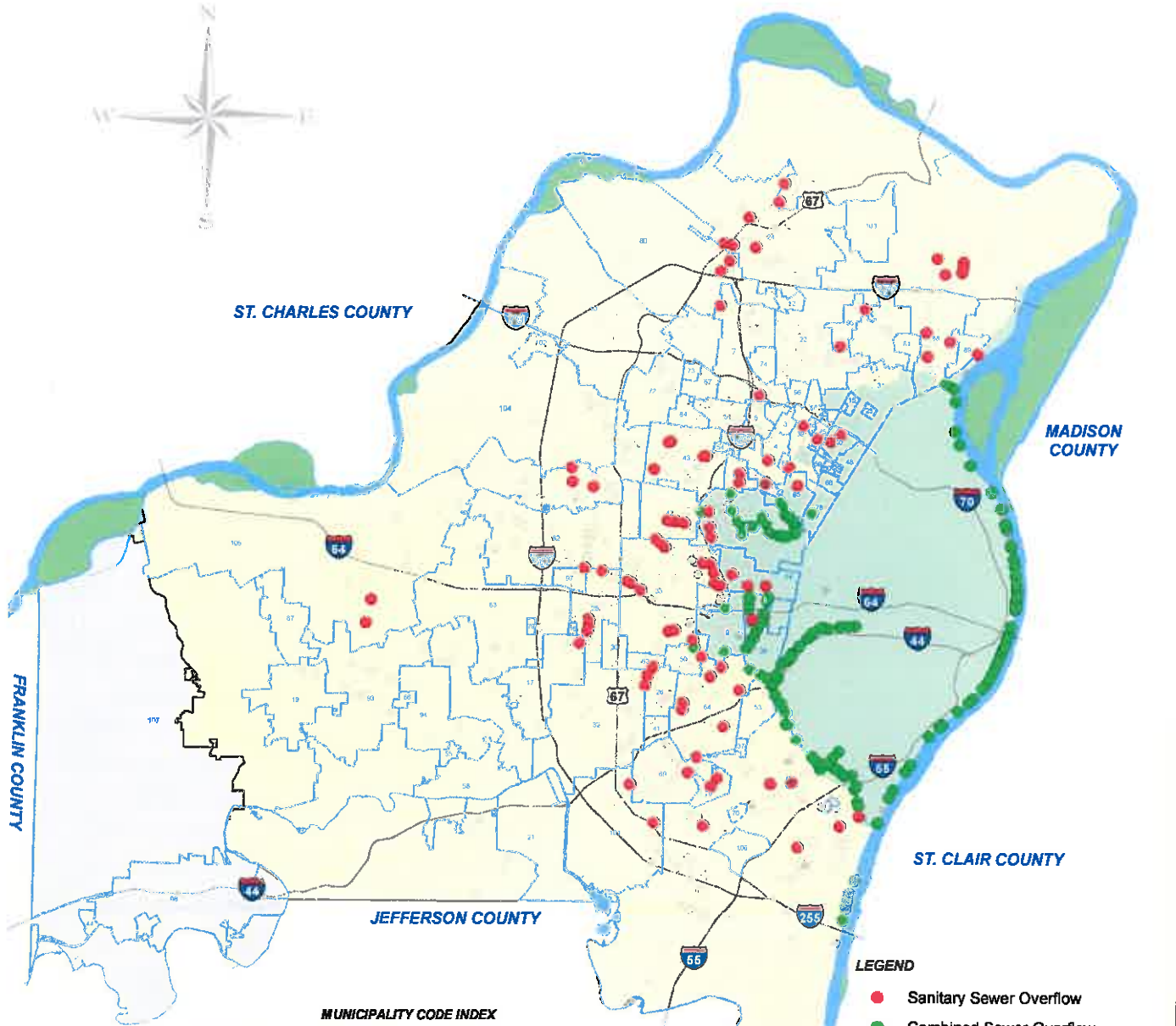




# The Metropolitan St. Louis Sewer District

## SEWER OVERFLOW LOCATIONS AS OF JUNE 30, 2018

Exhibit MSD 44



ST. CHARLES COUNTY

MADISON COUNTY

FRANKLIN COUNTY

ST. CLAIR COUNTY

JEFFERSON COUNTY

**LEGEND**

- Sanitary Sewer Overflow
- Combined Sewer Overflow
- Removed Sanitary Sewer Overflow
- Removed Combined Sewer Overflow
- Municipality
- Combined Sewer Area
- Separate Sewer Area
- St. Louis County (Out of MSD)

**MUNICIPALITY CODE INDEX**

BELLA VILLA	002	NORTHWOODS	040	KINLOGH	074
BELLEVIEW	003	OAKLAND	041	HANLEY HILLS	076
BEL-NOR	004	OLIVETTE	042	NORWOOD COURT	077
BEL-RIDGE	006	OVERLAND	043	WELLSTON	078
BERKELEY	007	PACIFIC	044	COUNTRY LIFE ACRES	079
BEVERLY HILLS	008	PASADENA HILLS	046	HAZELWOOD	080
BRENTWOOD	009	PASADENA PARK	048	MOLINE ACRES	081
BRIDGETON	010	PINE LAWN	049	CREVE COEUR	082
CALVERTON PARK	012	RICHMOND HEIGHTS	049	TOWN AND COUNTRY	083
CHARLACK HILL	013	ROCK HILL	050	BRECKENRIDGE HILLS	084
CLAYTON	014	ST. JOHN	051	PAGEDALE	085
COUNTRY CLUB HILLS	016	SHREWSBURY	053	GREENDALE	086
CRYSTAL LAKE PARK	019	SYCAMORE HILLS	054	CLARKSON VALLEY	087
DES PERES	020	TWIN OAKS	055	BELLEFONTAINE NEIGHBORS	088
ELLISVILLE	019	UPLANDS PARK	056	RIVERVIEW	088
FENTON	021	UNIVERSITY CITY	057	BALLWIN	093
FERGUSON	022	VALLEY PARK	058	MANCHESTER	094
FLORELL HILLS	023	VELDA CITY	059	BELLWOOD	096
FLORESSANT	024	VELDA VILLAGE HILLS	059	COOL VALLEY	096
FRONTENAC	025	VINITA PARK	061	WESTWOOD	097
GLENDALE	026	WARSON WOODS	063	EUREKA	098
GLEN ECHO PARK	027	WEBSTER GROVES	064	SUNSET HILLS	101
GRANTWOOD VILLAGE	029	WILBUR PARK	066	CHAMP	102
HUNTLEIGH	030	WINCHESTER	066	BLACK JACK	103
JENNINGS	031	WOODSON TERRACE	067	MARYLAND HEIGHTS	104
KIRKWOOD	032	HILLSDALE	068	CHESTERFIELD	105
LADUE	033	CRESTWOOD	069	GREENPARK	106
MAPLEWOOD	036	LAGESHIRE	070	WILDWOOD	107
MARLBOROUGH	037	ST. ANN	072		
NORMANDY	039	EDMUNDSON	073		

