



Public Hearing for Engineering Report, Environmental Impacts, and Public User Charge

for

Missouri River WWTP Secondary Treatment Expansion (Digester Rehabilitation)



September 9, 2009



Before we start:

- Please be sure you signed the attendance sheet
- Introductions:
 - B&V
 - MSD



AGENDA

Three Sub-Hearings in One Public Hearing

- Present project's MDNR Engineering Report
 - Receive public comments
- Present environmental impacts
 - Receive public comments
- Present public user charge
 - Receive public comments



Sub-Meeting No. 1

MDNR ENGINEERING REPORT



MDNR Engineering Report

- Missouri River WWTP
- Introduction to the project
- Current design project



MDNR Engineering Report

- Missouri River WWTP
 - Located in Maryland Heights, MO
 - Service area approximately 146 square miles
 - Constructed in late-1980's
 - Full primary and secondary treatment facility
 - Existing digesters and equipment all original
 - Current peak daily flow capacity = 28 mgd
 - Planned peak flow daily flow capacity = 38 mgd
 - Planned peak wet weather flow capacity = 80 mgd/190 mgd



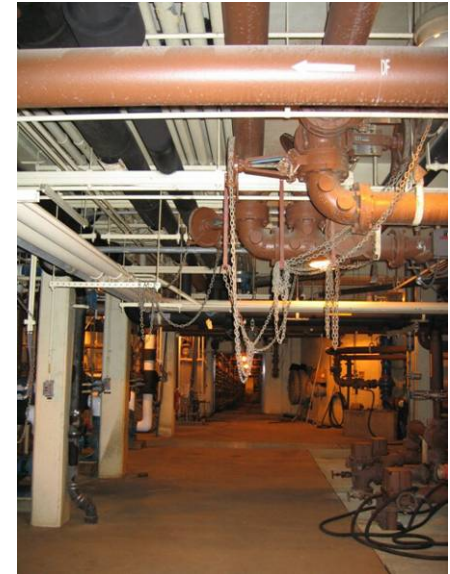
MDNR Engineering Report

- Introduction to Project
 - Improvements to existing anaerobic digesters
 - Anaerobic digestion
 - Pathogen reduction
 - Destruction/reduction of solids
 - Generate useable gas
 - Alternatives
 - Leave “as-is”
 - Complete replacement
 - Improvements



MDNR Engineering Report

- Current design project
 - Leaving digester structure, replacing equipment
 - Removal and disposal of ex. materials
 - Replace roofs
 - Replace digester mixing systems
 - Replace boilers
 - Replace and relocate gas flare
 - Miscellaneous piping, valves, and equipment
 - Estimated cost \$10,050,000



MDNR Engineering Report

Questions regarding Engineering Report?



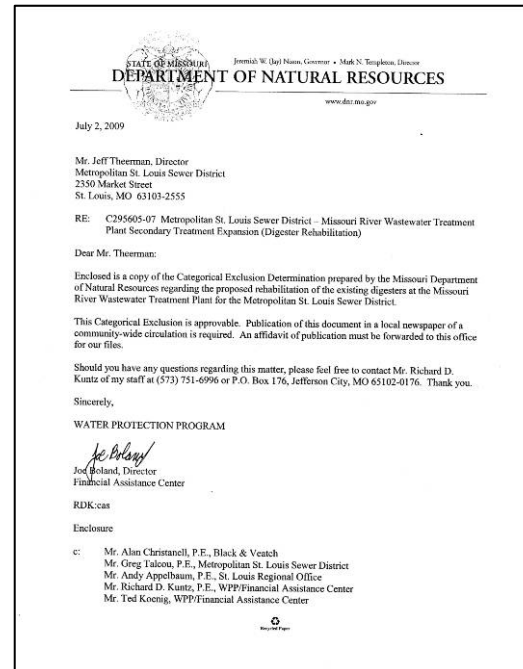
Sub-Meeting No. 2

ENVIRONMENTAL IMPACTS



Environmental Impacts

- Categorical Exclusion determined to be approvable by MDNR July 2, 2009
- Published locally in newspapers as required by MDNR



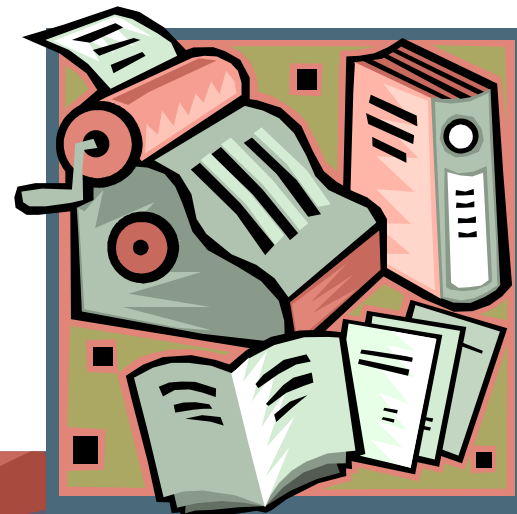
Environmental Impacts

Questions regarding Environmental Impacts?



Sub-Meeting No. 3

PUBLIC USER CHARGE



Public User Charge

- Project financed by MSD's current Capital Improvements and Replacement Program (CIRP)
- CIRP funded by revenue bonds and current revenues from wastewater charges
- Project financing approved as part of the SRF Loan and ARRA Grant/Loan program for fiscal year 2010 Intended Use Plan
- August 2008 election approved sale of revenue bonds
- No increase in user charges specifically for project



Public User Charge

Questions regarding charges?



Closure of Public Hearing

Thank you for your time and interest.

