

Draft Agenda

Bill Ehrhard, Program Management

- Facility Plan Meeting
- Environmental Impact Hearing
- User Charge Hearing



Attendance Sheet

Everyone Please Sign In!



PRIORITIES
PERFORMANCE
SERVICE



Public Meeting

Facility Plan and Engineering Alternatives for

Creve Coeur Creek Sanitary Trunk Sewer Relief Phase II MSD # 2003063B

Patricia Pride, MSD Project Manager



Project Justification

- **Location**

- Cities of Chesterfield and Town & Country, Missouri
- Creve Coeur Creek Watershed

- **Problems**

- Insufficient capacity to carry the storm flows
- Poor condition of sewer trunk joints



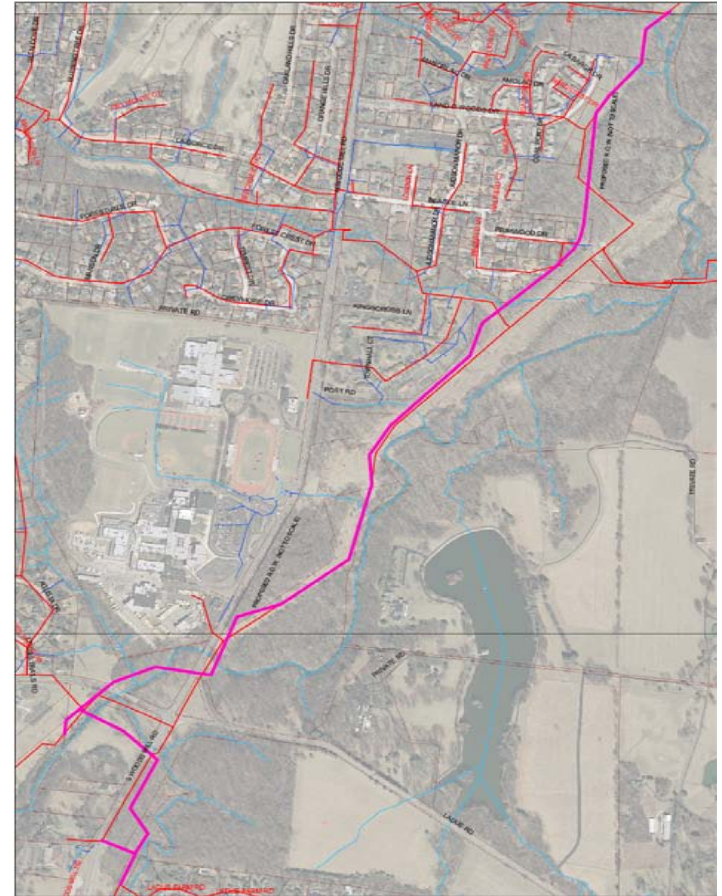
Alternative Alignments

- Alternative 1: Do Nothing \$0
- Alternative 2: \$11,534,830
- Alternative 3: \$12,823,658
- Alternative 4: \$13,583,706
- Alternative 5: \$13,946,706
- Alternative 6: \$ 9,634,900



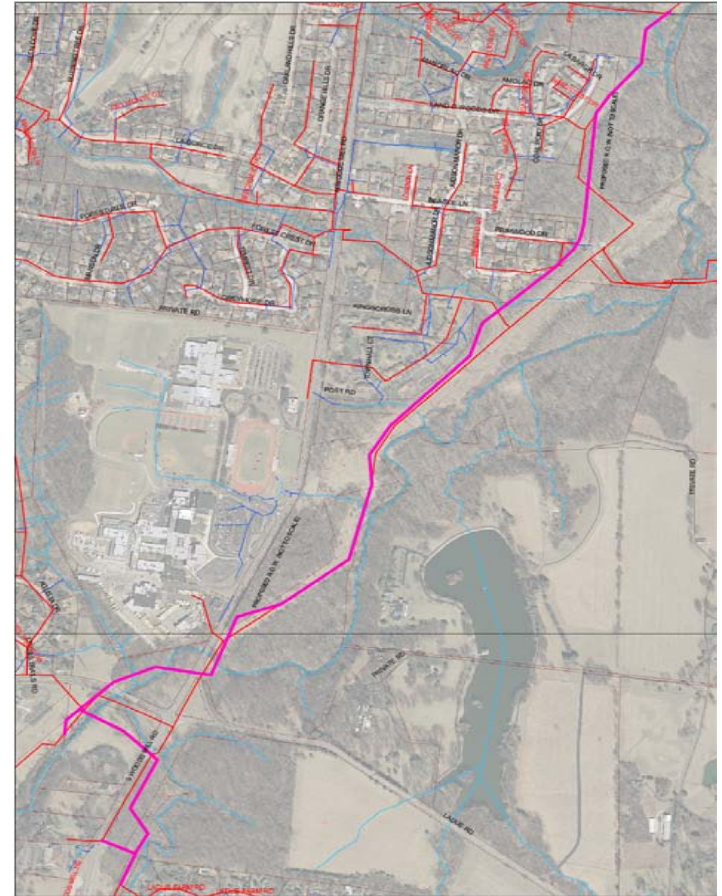
Recommended Alternative

- MSD chose to stay within its existing easement, which was the most economical solution estimated at \$9,634,900.00
- Later MSD entered into a Utility Agreement with MODOT
 - changing the length of the project, while moving a portion into the right of way.
 - cost for this alignment including design fees and easement acquisition is \$10,127,000.00.



Recommended Alternative

- **The chosen alternative**
 - will reduce storm water flow,
 - is sized to allow future removal of sanitary sewer overflows (SSO's),
 - will alleviate basement backups from the collection system.
- **The construction will consist of**
 - approximately 10,500 linear feet of pipe sewers ranging in diameter from 42 inches 54 inches,
 - existing sewers connections will be reconnected along the alignment
 - one bypass (BP-611) will be removed.



Questions/Answers



PRIORITIES
PERFORMANCE
SERVICE



Public Hearing

Environmental Impacts

Creve Coeur Creek Sanitary Trunk Sewer Relief Phase II MSD # 2003063B

Patricia Pride, MSD Project Manager



Environmental Impacts

- Reduced impacts wetlands and creeks where possible
- Wetlands delineation report
- Army Corps of Engineers 404 permit Application
- Individual Permit was Public Noticed and Mitigation Requirements were set
- Compensatory Mitigation Plan Prepared & Mitigation Credits Purchased
- Utility Agreement with MODOT
 - Reduced impact to forested wetlands



Environmental Impacts

- **Agency comments**

- Public notice of the USACE individual permit gave other agencies opportunity to comment.
- This project was found to not impact any known or expected cultural resources.
- This did trigger a Phase II Archaeological Survey of Fern Ridge Mound #9. The State Historic Preservation Office has reviewed the survey and determined Mound #9 not to eligible for inclusion in the National Register of Historic Places



Environmental Impacts

- **Treatment and Disposal**

- This project does not affect the degree of treatment or capacity at the L-52 pump station or the Missouri River Treatment Plant. The small increase in the system flow will not exceed the capacity of the collection system or treatment facility and the level of treatment will not be affected.



Environmental Impacts

- **Personal Property Impacts**

- All areas disturbed by construction will be restored.
- The work for this job will occur in an existing MSD easement or Row.

- **Categorical Exclusion**

- The proposed project is a replacement of existing sewer lines constructed in previously disturbed areas within the existing system service area and is intended to serve existing customers. Our findings demonstrate the fact that the proposed improvements will not directly or indirectly have a significant environmental impact. For these reasons a categorical exclusion was requested from MDNR.



Questions/Answers



PRIORITIES
PERFORMANCE
SERVICE



Public Hearing

Facility Plans for MSD Projects

User Charge Costs



Questions/Answers



PRIORITIES
PERFORMANCE
SERVICE

