



NEPC, LLC

YOU DEMAND MORE. So do we.SM



457 Deferred Compensation Plan

Fourth Quarter 2010 Executive Summary

February 24, 2011

Michael J. Valchine, CAIA, Consultant
Dion Stevens, Consultant
Kim Kaczor, Senior Analyst

One Main Street, Cambridge, MA 02142
TEL: 617.374.1300 | FAX: 617.374.1313 | www.nepc.com

25
Years
1986-2011

CAMBRIDGE | ATLANTA | CHARLOTTE | CHICAGO | DETROIT | LAS VEGAS | SAN FRANCISCO

Q4 2010: Capital Markets Summary

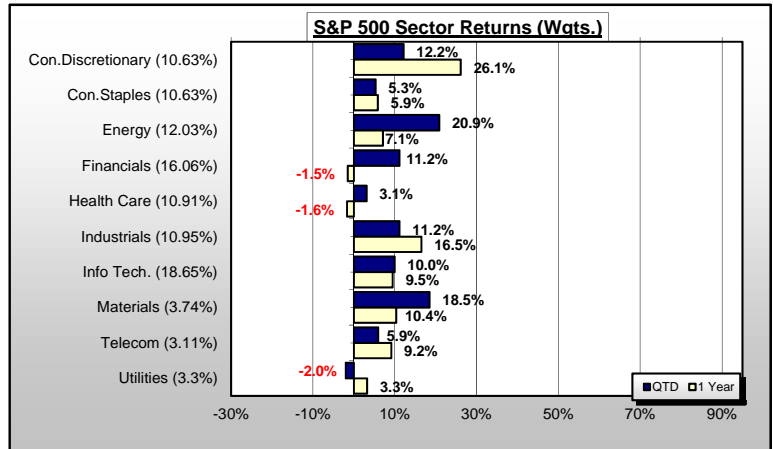
		Qtr.	1 Yr.	3 Yr.	5 Yr.	10 Yr.
World Equity Benchmarks						
MSCI World	World	9.0%	11.8%	-4.9%	2.4%	2.3%
Domestic Equity Benchmarks						
S&P 500	Large Core	10.8%	15.1%	-2.9%	2.3%	1.4%
Russell 1000	Large Core	11.2%	16.1%	-2.4%	2.6%	1.8%
Russell 1000 Growth	Large Growth	11.8%	16.7%	-0.5%	3.8%	0.0%
Russell 1000 Value	Large Value	10.5%	15.5%	-4.4%	1.3%	3.3%
S&P Mid Cap 400	Mid Core	13.5%	26.6%	3.5%	5.7%	7.2%
Russell 2000	Small Core	16.3%	26.9%	2.2%	4.5%	6.3%
Russell 2000 Growth	Small Growth	17.1%	29.1%	2.2%	5.3%	3.8%
Russell 2000 Value	Small Value	15.4%	24.5%	2.2%	3.5%	8.4%
NAREIT All Composite	REIT	7.7%	27.6%	0.4%	2.2%	10.2%
International Equity Benchmarks						
MSCI EAFE	Int'l Developed	6.6%	7.8%	-7.0%	2.5%	3.5%
MSCI EME	Em. Mkt. Eqty.	7.3%	18.9%	-0.3%	12.8%	15.9%
MSCI ACWI ex US	International	7.2%	11.2%	-5.0%	4.8%	5.5%
S&P EPAC SmallCap	Small Cap Int'l	10.2%	19.4%	-3.4%	4.5%	8.8%
Domestic Fixed Income Benchmarks						
Barclays Aggregate	Core Bonds	-1.3%	6.5%	5.9%	5.8%	5.8%
Barclays High Yield	High Yield	3.2%	15.1%	10.4%	8.9%	8.9%
Barclays 1-10 Muni.	Municipal Bond	-1.9%	3.1%	4.8%	4.6%	4.6%
Barclays 1-10 TIPS	Inflation	0.1%	5.2%	4.8%	5.4%	6.5%
90 Day T-Bill	Cash	0.0%	0.1%	0.8%	2.4%	2.4%
Global Fixed Income Benchmarks						
Citigroup World Govt Bond	Global Bonds	-1.8%	5.2%	6.1%	7.1%	7.0%
J.P. Morgan EMBI Plus	Em. Mkt. Bonds	-2.3%	11.8%	8.3%	8.4%	10.6%
Diversified Benchmark						
Balanced Index *	Diversified	6.7%	13.8%	0.9%	4.4%	4.9%

*35% LC, 10% SC, 12% Int'l, 3% Emerging, 25% FI, 5% HY, 5% Global FI, 5% REITS



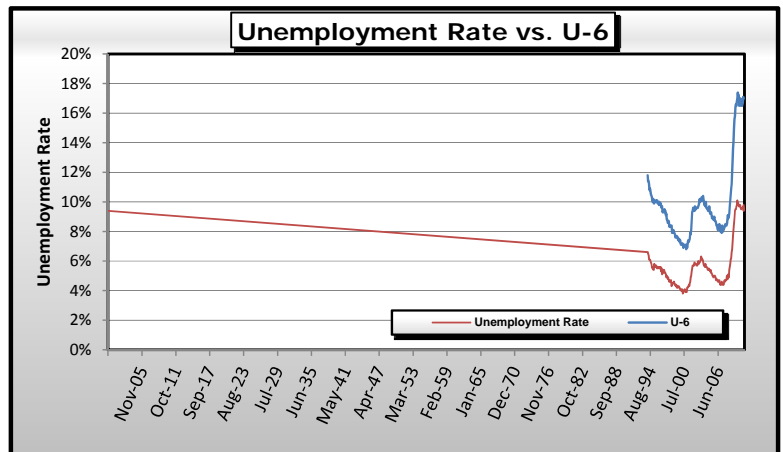
Q4 2010: Capital Markets Summary

Equity markets in the US posted positive results in the fourth quarter, pushing calendar-year returns higher. The rally that began in September continued into November before cooling off, only to return with vigor in December. Sentiment continued to drive the markets, as investors focused on the Fed's quantitative easing (QE2) program to stimulate the economy and tax relief designed to increase business and consumer spending. All sectors but utilities posted gains for the quarter.



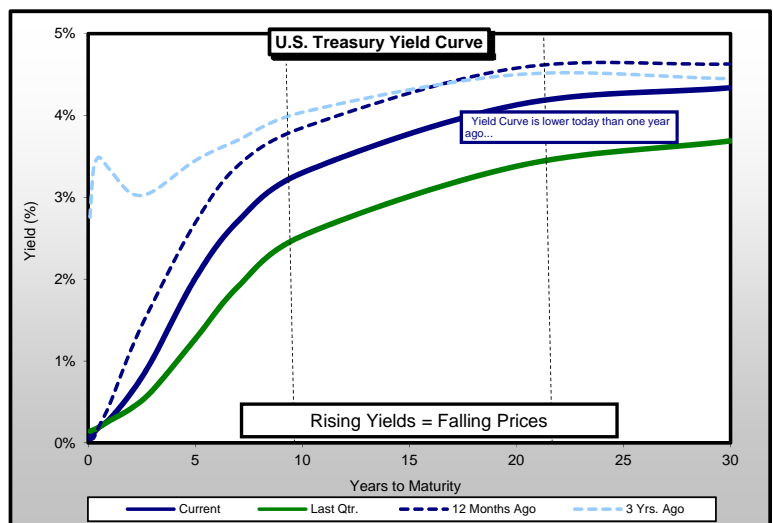
Unemployment remains persistently high but improved modestly over the quarter from 9.7% to 9.4%.

U-6 unemployment ended the year at 16.7%. U-6 is the broadest measure of unemployment. It includes people who are not actively looking for work, but who have indicated that they want a job and have looked for work (without success) sometime in the past 12 months, and people working part-time because they cannot find full-time work.



Persistently low levels of inflation combined with accommodative Fed policy helped to hold interest rates near record lows in 2010. The Barclays Capital Aggregate yield hit an all-time low of 2.35% in early November, but rose back above 3% in December with the extension of the Bush administration's tax cuts and mid-term election results that yielded a divided Congress.

NEPC's 2011 annual asset allocation letter, entitled "The Long View," forecasts lower market returns for the next 5 – 7 years because of depressed bond yields.



Asset Summary

Periods Ending 31-Dec-10	Universe	Beginning Year (\$000)	(%)	Beginning Quarter (\$000)	(%)	End Quarter (\$000)	(%)
Composite		\$27,905		\$29,416		\$31,487	
Lifecycle Options		\$472	2%	\$663	2%	\$758	2%
Vanguard Target Retirement Income	US OE Retirement Income	\$30	0%	\$46	0%	\$46	0%
Vanguard Target Retirement 2005	US OE Target Date 2000-2010	\$55	0%	\$0	0%	\$0	0%
Vanguard Target Retirement 2010	US OE Target Date 2000-2010	\$70	0%	\$195	1%	\$205	1%
Vanguard Target Retirement 2015	US OE Target Date 2011-2015	\$79	0%	\$68	0%	\$83	0%
Vanguard Target Retirement 2020	US OE Target Date 2016-2020	\$23	0%	\$30	0%	\$52	0%
Vanguard Target Retirement 2025	US OE Target Date 2021-2025	\$42	0%	\$53	0%	\$64	0%
Vanguard Target Retirement 2030	US OE Target Date 2026-2030	\$61	0%	\$74	0%	\$87	0%
Vanguard Target Retirement 2035	US OE Target Date 2031-2035	\$10	0%	\$42	0%	\$49	0%
Vanguard Target Retirement 2040	US OE Target Date 2036-2040	\$40	0%	\$62	0%	\$67	0%
Vanguard Target Retirement 2045	US OE Target Date 2041-2045	\$44	0%	\$24	0%	\$29	0%
Vanguard Target Retirement 2050	US OE Target Date 2050+	\$19	0%	\$70	0%	\$77	0%
Lifestyle Options		\$3,883	14%	\$4,129	14%	\$4,309	14%
Vanguard LifeStrategy Income	US OE Conservative Allocation	\$332	1%	\$366	1%	\$393	1%
Vanguard LifeStrategy Conserv Gr	US OE Conservative Allocation	\$647	2%	\$583	2%	\$618	2%
Vanguard LifeStrategy Moderate Gr	US OE Moderate Allocation	\$1,792	6%	\$2,049	7%	\$2,111	7%
Vanguard LifeStrategy Growth	US OE Large Blend	\$1,112	4%	\$1,131	4%	\$1,188	4%
Core Options		\$23,550	84%	\$24,624	84%	\$26,419	84%
Vanguard Prime Money Market Inv		\$1,356	5%	\$1,192	4%	\$1,034	3%
Vanguard Retirement Savings Trust		\$2,386	9%	\$2,800	10%	\$2,632	8%
Vanguard Total Bond Market Index	US OE Intermediate-Term Bond	\$2,344	8%	\$2,572	9%	\$2,496	8%
Vanguard Balanced Index	US OE Moderate Allocation	\$3,380	12%	\$3,607	12%	\$3,698	12%
Vanguard 500 Index	US OE Large Blend	\$3,044	11%	\$3,063	10%	\$3,501	11%
Vanguard Windsor II	US OE Large Value	\$5,290	19%	\$5,052	17%	\$5,602	18%
Vanguard U.S. Growth	US OE Large Growth	\$2,022	7%	\$2,006	7%	\$2,296	7%
Vanguard Mid Capitalization Index	US OE Mid-Cap Blend	\$1,039	4%	\$1,327	5%	\$1,650	5%
Vanguard Small Cap Index	US OE Small Blend	\$1,114	4%	\$1,370	5%	\$1,699	5%
Vanguard International Growth	US OE Foreign Large Blend	\$1,575	6%	\$1,636	6%	\$1,810	6%

Performance Summary – Target Date Funds

Periods Ending 31-Dec-10	Universe	Last Quarter (%)	One Year (%)	Three Years (%)	Five Years (%)	Ten Years (%)					
Lifecycle Funds											
Vanguard Target Retirement Income	US OE Retirement Income	2.5	49	9.4	42	3.6	19	5.1	15	n/a	
	<i>Vanguard Retirement Income Benchmark</i>	2.4		9.4		3.5		5.0		n/a	
Vanguard Target Retirement 2005	US OE Target Date 2000-2010	2.9	73	9.7	79	2.4	19	4.7	20	n/a	
	<i>Vanguard Target 2005 Benchmark</i>	3.0		10.0		2.4		4.6		n/a	
Vanguard Target Retirement 2010	US OE Target Date 2000-2010	4.6	54	11.4	33	1.8	25	n/a		n/a	
	<i>Vanguard Target 2010 Benchmark</i>	4.6		11.6		1.7		n/a		n/a	
Vanguard Target Retirement 2015	US OE Target Date 2011-2015	5.7	46	12.5	34	1.2	23	4.4	8	n/a	
	<i>Vanguard Target 2015 Benchmark</i>	5.8		12.6		1.1		4.4		n/a	
Vanguard Target Retirement 2020	US OE Target Date 2016-2020	6.7	34	13.1	35	0.5	19	n/a		n/a	
	<i>Vanguard Target 2020 Benchmark</i>	6.7		13.3		0.4		n/a		n/a	
Vanguard Target Retirement 2025	US OE Target Date 2021-2025	7.7	46	13.8	37	-0.2	29	3.9	18	n/a	
	<i>Vanguard Target 2025 Benchmark</i>	7.6		13.9		-0.3		3.9		n/a	
Vanguard Target Retirement 2030	US OE Target Date 2026-2030	8.5	39	14.4	33	-0.9	13	n/a		n/a	
	<i>Vanguard Target 2030 Benchmark</i>	8.5		14.5		-1.1		n/a		n/a	
Vanguard Target Retirement 2035	US OE Target Date 2031-2035	9.5	28	15.1	26	-1.2	28	3.6	18	n/a	
	<i>Vanguard Target 2035 Benchmark</i>	9.4		15.2		-1.3		3.6		n/a	
Vanguard Target Retirement 2040	US OE Target Date 2036-2040	9.5	29	15.2	35	-1.1	11	n/a		n/a	
	<i>Vanguard Target 2040 Benchmark</i>	9.5		15.2		-1.3		n/a		n/a	
Vanguard Target Retirement 2045	US OE Target Date 2041-2045	9.5	46	15.2	40	-1.1	23	3.8	20	n/a	
	<i>Vanguard Target 2045 Benchmark</i>	9.5		15.2		-1.3		3.7		n/a	
Vanguard Target Retirement 2050	US OE Target Date 2050+	9.5	41	15.2	35	-1.1	15	n/a		n/a	
	<i>Vanguard Target 2050 Benchmark</i>	9.5		15.2		-1.3		n/a		n/a	
Lifestyle Funds											
Vanguard LifeStrategy Income	US OE Conservative Allocation	1.5	92	9.2	66	3.1	34	4.8	29	4.8	26
	<i>Vanguard Income Benchmark</i>	1.4		8.1		4.2		5.0		5.8	
Vanguard LifeStrategy Conservative Gr	US OE Conservative Allocation	3.9	38	11.1	32	1.5	69	4.4	40	4.4	33
	<i>Vanguard Conservative Gr Benchmark</i>	3.7		9.5		2.1		4.1		5.6	
Vanguard LifeStrategy Moderate Gr	US OE Moderate Allocation	6.0	61	13.3	24	0.1	57	4.0	34	4.1	31
	<i>Vanguard Moderate Gr Benchmark</i>	5.6		11.2		0.1		3.3		5.1	
Vanguard LifeStrategy Growth	US OE Aggressive Allocation	8.4	30	15.1	22	-1.9	67	3.3	50	3.4	56
	<i>Vanguard Growth Benchmark</i>	7.9		12.2		-2.3		2.1		3.7	

Notes: Performance is net of fees and is annualized for periods longer than one year. Performance is ranked within Morningstar's style-specific universes, where "1" refers to the top percentile and "100" the bottom percentile. US OE = US open ended mutual fund.



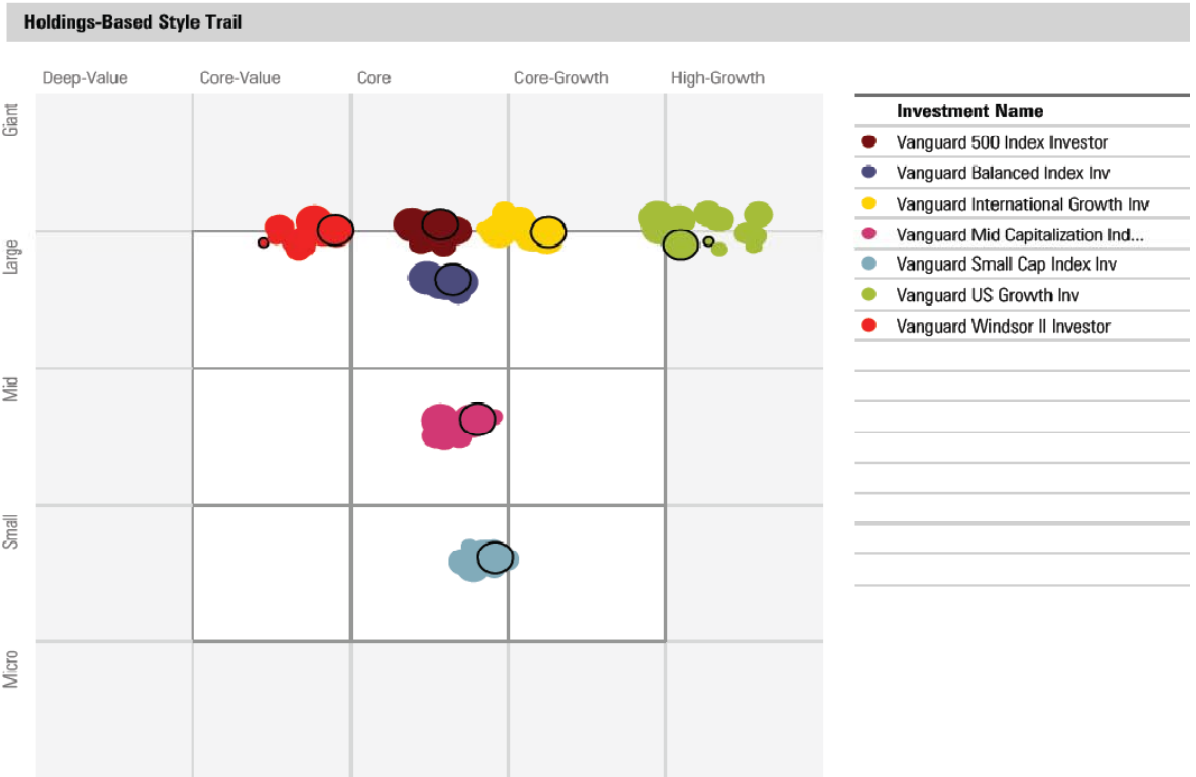
Performance Summary – Core Options

Periods Ending 31-Dec-10	Universe	Last Quarter (%)	One Year (%)	Three Years (%)	Five Years (%)	Ten Years (%)					
Capital Preservation Funds											
Vanguard Prime Money Market Inv		0.0	0.1	1.1	2.7	2.4					
<i>90 Day T-Bills</i>		<i>0.0</i>	<i>0.1</i>	<i>0.8</i>	<i>2.4</i>	<i>2.4</i>					
Vanguard Retirement Savings Trust		0.8	3.0	3.5	3.9	4.3					
<i>RL 3yr GIC</i>		<i>0.7</i>	<i>3.4</i>	<i>4.2</i>	<i>4.2</i>	<i>4.5</i>					
Fixed Income Funds											
Vanguard Total Bond Market Index Inv	US OE Intermediate-Term Bond	-1.4	76	6.4	73	5.8	52	5.7	39	5.6	41
<i>BarCap US Agg Bond TR USD</i>		<i>-1.3</i>		<i>6.5</i>		<i>5.9</i>		<i>5.8</i>		<i>5.8</i>	
Balanced funds											
Vanguard Balanced Index Inv	US OE Moderate Allocation	6.4	44	13.1	27	1.8	17	4.5	24	4.1	29
<i>60% S&P 500-40% BarCap Agg</i>		<i>5.9</i>		<i>12.1</i>		<i>1.1</i>		<i>4.1</i>		<i>3.5</i>	
Large Cap Equity Funds											
Vanguard 500 Index Investor	US OE Large Blend	10.7	43	14.9	31	-2.9	43	2.2	43	1.3	49
<i>S&P 500 TR</i>		<i>10.8</i>		<i>15.1</i>		<i>-2.9</i>		<i>2.3</i>		<i>1.4</i>	
Vanguard Windsor II Investor	US OE Large Value	9.8	64	10.6	88	-3.8	47	1.5	49	3.6	36
<i>Russell 1000 Value TR USD</i>		<i>10.5</i>		<i>15.5</i>		<i>-4.4</i>		<i>1.3</i>		<i>3.3</i>	
Vanguard US Growth Inv	US OE Large Growth	13.0	21	11.5	83	-2.2	48	1.0	82	-3.6	97
<i>Russell 1000 Growth TR USD</i>		<i>11.8</i>		<i>16.7</i>		<i>-0.5</i>		<i>3.8</i>		<i>0.0</i>	
Small and Mid Cap Equity Funds											
Vanguard Mid Capitalization Index Inv	US OE Mid-Cap Blend	13.6	42	25.5	29	0.8	48	4.3	49	6.8	33
<i>MSCI US Mid Cap 450 GR USD</i>		<i>13.6</i>		<i>25.7</i>		<i>0.9</i>		<i>4.4</i>		<i>6.4</i>	
Vanguard Small Cap Index Inv	US OE Small Blend	15.6	55	27.7	25	3.6	29	5.4	30	7.2	44
<i>MSCI US Small Cap 1750 GR USD</i>		<i>15.6</i>		<i>27.8</i>		<i>3.6</i>		<i>5.4</i>		<i>7.6</i>	
International Equity Funds											
Vanguard International Growth Inv	US OE Foreign Large Blend	7.2	51	15.7	8	-3.4	12	5.7	11	4.9	21
<i>MSCI AC World Ex USA NR USD</i>		<i>7.2</i>		<i>11.2</i>		<i>-5.0</i>		<i>4.8</i>		<i>5.5</i>	

Notes: Performance is net of fees and is annualized for periods longer than one year. Performance is ranked within Morningstar's style-specific universes, where "1" refers to the top percentile and "100" the bottom percentile. US OE = US open ended mutual fund. Effective June 1, 2010, Vanguard International Value Fund changed their benchmark from MSCI EAFE to MSCI AC World Ex USA.



Style Analysis



The above "snail trail" displays changes to a fund's style over time as determined by Morningstar's holdings-based analysis over the prior three years. The smallest circled plot point represents the furthest period; the largest circled plot point represents the current period. The number of plot points is a function of the frequency of each fund's release of holdings data.

Vanguard Retirement Savings Trust

Fund Name:	Vanguard Retirement Savings Trust
Vehicle Type:	Stable Value
Inception:	1/2/1989
Valuation:	103.92
Crediting Rate:	3.58
Duration:	2.73
Cash Flows YTD:	\$275,330,718.57
Subprime and/or Impaired Exposure:	N/A
Wrap Providers:	Bank of America IXIS Corp & Inv Bank JPMorgan Chase Prudential Rabobank State Street Bank United of Omaha
Preferred Benchmark	Citigroup 3-Month T-Bill Index

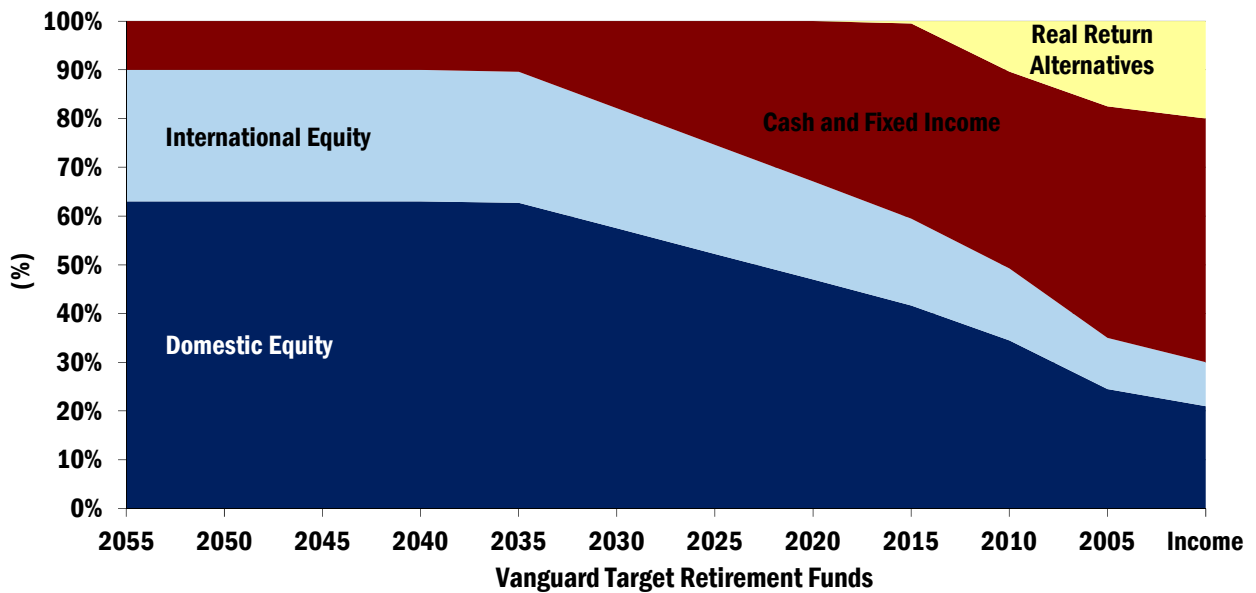
Fixed Income Characteristics	
Average Duration:	2.73
Average Quality:	Aaa
BBB Securities:	0.35%
Below Investment Grade Securities:	0
Asset Allocation	
Traditional Investment Contracts (GICs, BICs, etc):	5.55%
Constant Duration Contracts (Synthetics):	91.57%
Cash Investments:	2.88%
Other:	0%

Product Summary

- Short-term, high credit-quality fixed-income.
- Income consistent with a 2- to 4-year average duration.
- Seeks to maintain a stable net asset value.
- Conservative credit selection process.
- Innovative, risk-controlled portfolio construction process.
- Underlying funds structured to meet unique stable value investment needs.



Vanguard Target Retirement Funds



Holdings*	2050	2040	2030	2020	2010	Income
Cash and Fixed Income	10.0	10.0	17.9	32.9	40.4	50.0
Vanguard Total Bond Market II Index Fund	10.0	10.0	17.9	32.9	40.2	45.0
Vanguard Prime Money Market Fund	0.0	0.0	0.0	0.0	0.2	5.0
Domestic Equity	63.0	63.0	57.5	47.0	34.5	21.0
Vanguard Total Stock Market Index Fund	63.0	63.0	57.5	47.0	34.5	21.0
International Equity	27.0	27.0	24.6	20.1	14.8	9.0
Vanguard Total International Stock Index Fund	27.0	27.0	24.6	20.1	14.8	9.0
Real Return Alternatives	0.0	0.0	0.0	0.0	10.4	20.0
Vanguard Inflation-Protected Securities Fund	0.0	0.0	0.0	0.0	10.4	20.0



*Holdings shown are targeted allocations for 2011 as reported by Vanguard

Vanguard Target Retirement Funds

History	2003	2004	2005	2006	2007	2008	2009	2010
<u>Vanguard Retirement Income</u>		<u>6.8</u>	<u>3.3</u>	<u>6.4</u>	<u>8.2</u>	<u>-10.9</u>	<u>14.3</u>	<u>9.4</u>
Bmark 1		6.9	3.4	6.5	8.1	-11.3	14.3	9.4
% Rank Category (2000-2014)		42	62	76	3	6	80	42
<u>Vanguard Retirement 2005</u>		<u>7.7</u>	<u>3.6</u>	<u>8.2</u>	<u>8.1</u>	<u>-15.8</u>	<u>16.2</u>	<u>9.7</u>
Bmark 1		7.7	3.8	8.2	8.1	-16.2	16.4	10.0
% Rank Category (2000-2014)		21	51	53	4	18	88	79
<u>Vanguard Retirement 2010</u>					<u>7.7</u>	<u>-20.7</u>	<u>19.3</u>	<u>11.4</u>
Bmark 1					7.8	-21.1	19.4	11.6
% Rank Category (2000-2014)					6	37	82	33
<u>Vanguard Retirement 2015</u>		<u>9.0</u>	<u>4.9</u>	<u>11.4</u>	<u>7.6</u>	<u>-24.1</u>	<u>21.3</u>	<u>12.5</u>
Bmark 1		9.1	5.0	11.5	7.5	-24.5	21.4	12.6
% Rank Category (2015-2029)		46	78	61	32	10	76	34
<u>Vanguard Retirement 2020</u>					<u>7.5</u>	<u>-27.0</u>	<u>23.1</u>	<u>13.1</u>
Bmark 1					7.5	-27.5	23.3	13.3
% Rank Category (2015-2029)					34	24	66	35
<u>Vanguard Retirement 2025</u>		<u>10.1</u>	<u>5.5</u>	<u>13.2</u>	<u>7.6</u>	<u>-30.1</u>	<u>24.8</u>	<u>13.8</u>
Bmark 1		10.1	5.5	13.4	7.6	-30.5	25.1	13.9
% Rank Category (2015-2029)		23	66	31	31	42	78	37
<u>Vanguard Retirement 2030</u>					<u>7.5</u>	<u>-32.9</u>	<u>26.7</u>	<u>14.4</u>
Bmark 1					7.6	-33.4	27.0	14.5
% Rank Category (2030+)					38	6	74	33
<u>Vanguard Retirement 2035</u>		<u>12.0</u>	<u>6.3</u>	<u>15.2</u>	<u>7.5</u>	<u>-34.7</u>	<u>28.2</u>	<u>15.1</u>
Bmark 1		11.9	6.5	15.4	7.5	-35.1	28.5	15.2
% Rank Category (2030+)		43	87	34	38	16	64	26
<u>Vanguard Retirement 2040</u>					<u>7.5</u>	<u>-34.5</u>	<u>28.3</u>	<u>15.2</u>
Bmark 1					7.5	-35.1	28.5	15.2
% Rank Category (2030+)					38	14	77	35
<u>Vanguard Retirement 2045</u>		<u>12.9</u>	<u>7.0</u>	<u>16.0</u>	<u>7.5</u>	<u>-34.6</u>	<u>28.2</u>	<u>15.2</u>
Bmark 1		13.0	7.0	16.2	7.5	-35.1	28.5	15.2
% Rank Category (2030+)		19	75	25	39	15	83	40
<u>Vanguard Retirement 2050</u>					<u>7.5</u>	<u>-34.6</u>	<u>28.3</u>	<u>15.2</u>
Bmark 1					7.5	-35.1	28.5	15.2
% Rank Category (2030+)					38	16	91	35

Notes: Performance shown is net of fee. 2009 & 2010 category ranks are representative of the new, broader Morningstar universes implemented in 2009. Bmark 1 is a Composite Weighted Indexes prepared by Vanguard.



Vanguard LifeStrategy Income Inv VASIX

Currency
USD

Morningstar Category
US OE Conservative Allocation

Benchmark 1

Vanguard Income Custom Benchmark

Equity Style Summary as of 9/30/2010

28.05	29.03	26.78	Log	Market Cap	%
4.96	4.98	4.05	Mid	Giant	49.08
0.70	0.77	0.70	Sm	Large	34.69
				Mid	14.03
				Small	1.65
				Micro	0.54
Val	Core	Grth		Average Mkt Cap (mil)	38,398.36

Value Factors	%	Growth Factors	%
Price/Earnings	14.13	LT Earn Grth	9.78
Price/Book	2.01	Historical Earn Grth	-5.49
Price/Sales	1.26	Book Val Grth	-1.00
Price/Cash Flow	5.41	Sales Grth	-2.91
Dividend Yield	2.40	Cash Flow Grth	-2.17

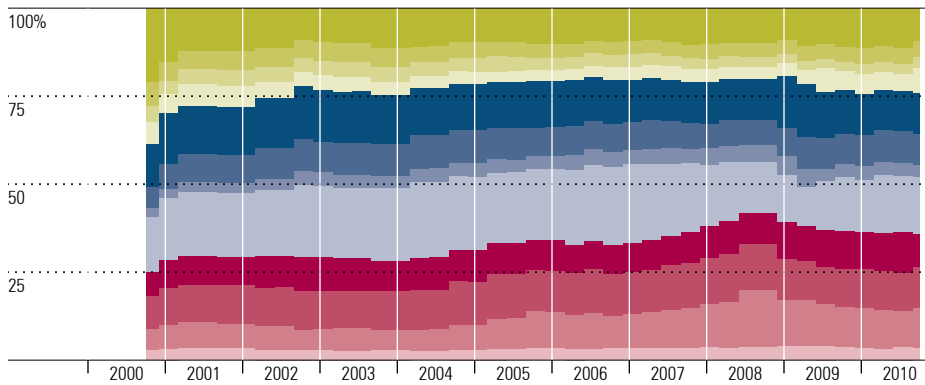
Morningstar Fixed Income Style BoxSM as of 9/30/2010



Fixed Income Statistics as of 9/30/2010

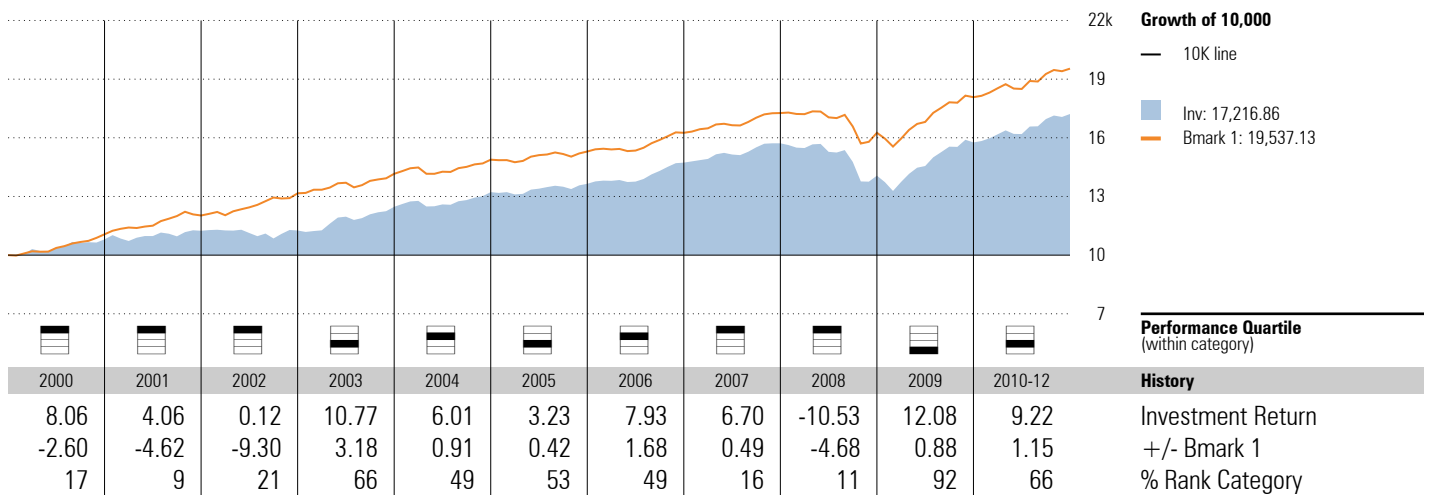
Avg Eff Duration	4.13	Avg Wtd Coupon	4.42
Avg Eff Maturity	5.64	Avg Wtd Price	108.75
Avg Credit Quality	A		

Historical Equity Sectors 2000-10-31 to 2010-09-30



Sector	Most Recent %		Average %	
	Subject	B1	Subject	B1
Hardware	9.3	—	10.6	—
Software	4.5	—	4.6	—
Media	3.1	—	3.6	—
Telecom	7.1	—	4.2	—
Health Care	11.9	—	13.1	—
Cons Svcs	8.6	—	8.3	—
Bus Svcs	3.5	—	3.8	—
Financial	16.0	—	18.6	—
Cons Goods	9.5	—	9.0	—
Materials	11.7	—	11.5	—
Energy	11.1	—	9.2	—
Utilities	3.7	—	3.4	—

Investment Growth as of 12/31/2010



Vanguard LifeStrategy Cnsrv Gr Inv VSCGX

Currency
USD

Morningstar Category
US OE Conservative Allocation

Benchmark 1

Vanguard Conservative Growth Custom Benc...

Equity Style Summary as of 9/30/2010

27.34	27.06	25.52	Lrg	Market Cap	%
5.44	5.48	4.87	Mld	Giant	46.71
1.39	1.45	1.45	Sm	Large	33.09
				Mid	15.87
				Small	3.18
				Micro	1.15
Val	Core	Grth		Average Mkt Cap (mil)	31,041.65

Value Factors	%	Growth Factors	%
Price/Earnings	13.94	LT Earn Grth	9.96
Price/Book	1.93	Historical Earn Grth	-12.85
Price/Sales	1.18	Book Val Grth	-34.82
Price/Cash Flow	5.29	Sales Grth	-37.85
Dividend Yield	2.51	Cash Flow Grth	-4.17

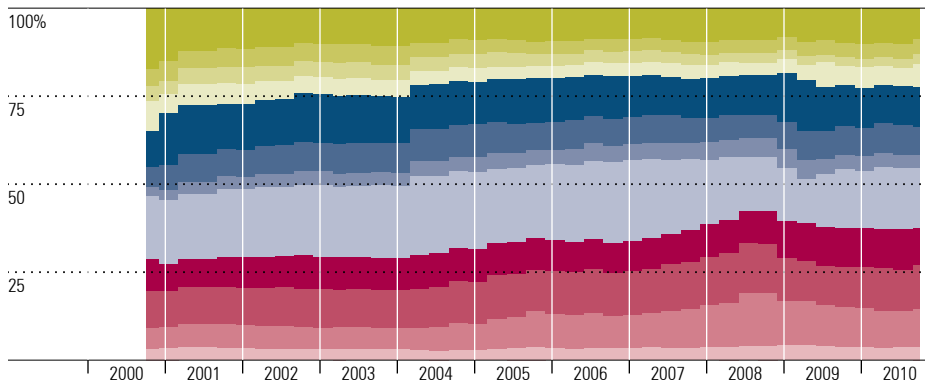
Morningstar Fixed Income Style BoxSM as of 9/30/2010



Fixed Income Statistics as of 9/30/2010

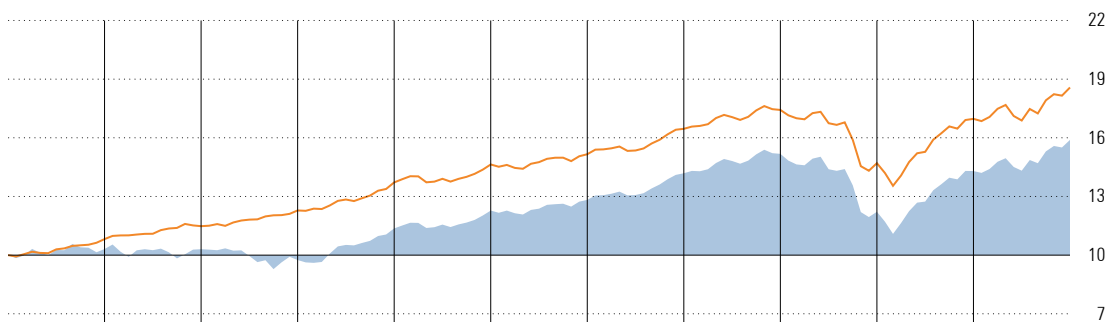
Avg Eff Duration	3.86	Avg Wtd Coupon	4.43
Avg Eff Maturity	5.25	Avg Wtd Price	109.00
Avg Credit Quality	A		

Historical Equity Sectors 2000-10-31 to 2010-09-30



	Most Recent %		Average %	
	Subject	B1	Subject	B1
Hardware	8.7	—	9.9	—
Software	4.2	—	4.3	—
Media	2.9	—	3.5	—
Telecom	6.5	—	4.6	—
Health Care	11.3	—	12.4	—
Cons Svcs	8.1	—	8.0	—
Bus Svcs	3.7	—	4.2	—
Financial	17.0	—	19.4	—
Cons Goods	10.4	—	9.3	—
Materials	12.7	—	11.8	—
Energy	10.7	—	9.0	—
Utilities	3.8	—	3.5	—

Investment Growth as of 12/31/2010



Growth of 10,000
 — 10K line
 ■ Inv: 15,892.91
 ■ Bmark 1: 18,572.94

Year	2000	2001	2002	2003	2004	2005	2006	2007	2008	2009	2010-12
Investment Return	3.12	-0.08	-5.36	16.57	8.02	4.45	10.62	6.99	-19.52	17.06	11.14
+/- Bmark 1	-5.09	-6.19	-12.36	4.90	1.33	0.88	2.05	1.13	-3.90	1.64	1.69
% Rank Category	58	51	71	20	13	18	12	13	54	75	32

Performance Quartile
 (within category)
History
 Investment Return
 +/- Bmark 1
 % Rank Category

Vanguard LifeStrategy Moderate Gr Inv VSMGX

Currency
USD

Morningstar Category
US OE Moderate Allocation

Benchmark 1

Vanguard Moderate Growth Custom Benchm...

Equity Style Summary as of 9/30/2010

	Val	Core	Grth		Market Cap	%
Lrg	27.08	26.37	25.08		Giant	45.87
					Large	32.52
					Mid	16.52
Mid	5.61	5.66	5.17		Small	3.73
					Micro	1.37
Sm	1.63	1.69	1.71		Average Mkt Cap (mil)	28,817.38

Morningstar Fixed Income Style Box™ as of 9/30/2010

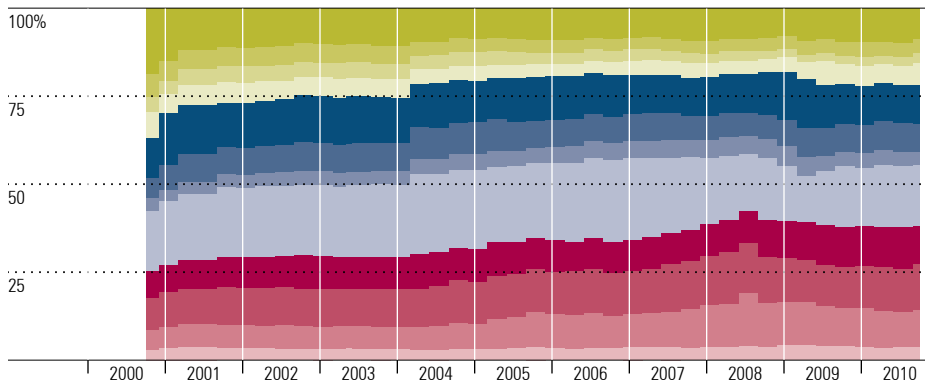
Avg Eff Duration	4.78		
Avg Eff Maturity	6.60		
Avg Credit Quality	AA		
Avg Wtd Coupon	4.47		
Avg Wtd Price	112.08		

Value Factors	%	Growth Factors	%
Price/Earnings	13.88	LT Earn Grth	10.03
Price/Book	1.90	Historical Earn Grth	-14.53
Price/Sales	1.15	Book Val Grth	-39.19
Price/Cash Flow	5.25	Sales Grth	-41.43
Dividend Yield	2.55	Cash Flow Grth	-4.79

Fixed Income Statistics as of 9/30/2010

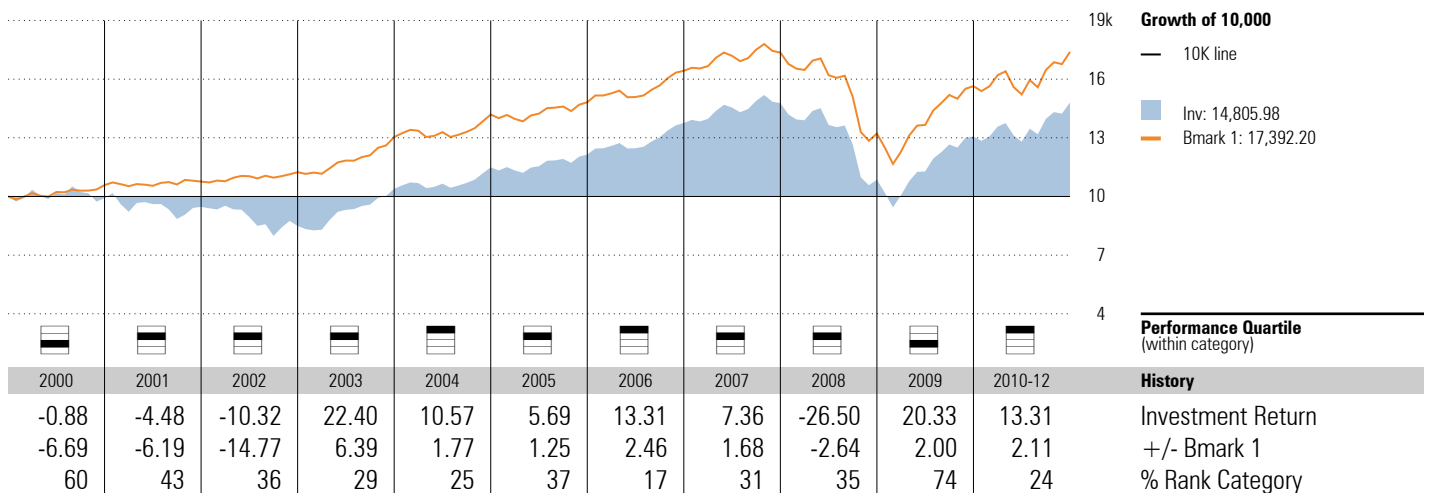
Avg Eff Duration	4.78	Avg Wtd Coupon	4.47
Avg Eff Maturity	6.60	Avg Wtd Price	112.08
Avg Credit Quality	AA		

Historical Equity Sectors 2000-10-31 to 2010-09-30



	Most Recent %		Average %	
	Subject	B1	Subject	B1
Hardware	8.6	—	9.7	—
Software	4.1	—	4.3	—
Media	2.8	—	3.5	—
Telecom	6.4	—	4.7	—
Health Care	11.1	—	12.2	—
Cons Svcs	7.9	—	7.9	—
Bus Svcs	3.7	—	4.3	—
Financial	17.4	—	19.8	—
Cons Goods	10.7	—	9.4	—
Materials	13.0	—	11.8	—
Energy	10.6	—	8.8	—
Utilities	3.8	—	3.6	—

Investment Growth as of 12/31/2010



Vanguard LifeStrategy Growth Inv VASGX

Currency: USD
 Morningstar Category: US OE Aggressive Allocation

Benchmark 1
 Vanguard Growth Custom Benchmark

Equity Style Summary as of 9/30/2010

26.95	26.02	24.85	Lrg	Market Cap	%
5.70	5.76	5.31		Giant	45.44
1.76	1.81	1.85		Large	32.24
			Mld	Mid	16.85
			Sm	Small	4.00
				Micro	1.48
Val	Core	Grth		Average Mkt Cap (mil)	27,753.87

Value Factors	%	Growth Factors	%
Price/Earnings	13.85	LT Earn Grth	10.06
Price/Book	1.89	Historical Earn Grth	-15.31
Price/Sales	1.14	Book Val Grth	-41.00
Price/Cash Flow	5.23	Sales Grth	-42.95
Dividend Yield	2.57	Cash Flow Grth	-5.11

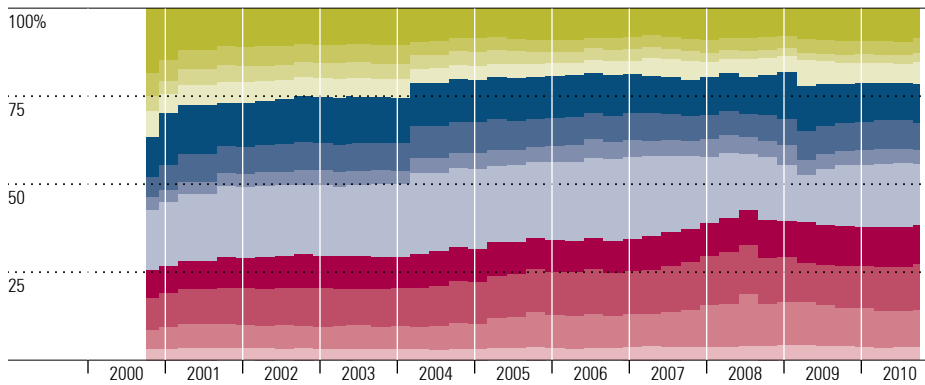
Morningstar Fixed Income Style BoxSM as of 9/30/2010



Fixed Income Statistics as of 9/30/2010

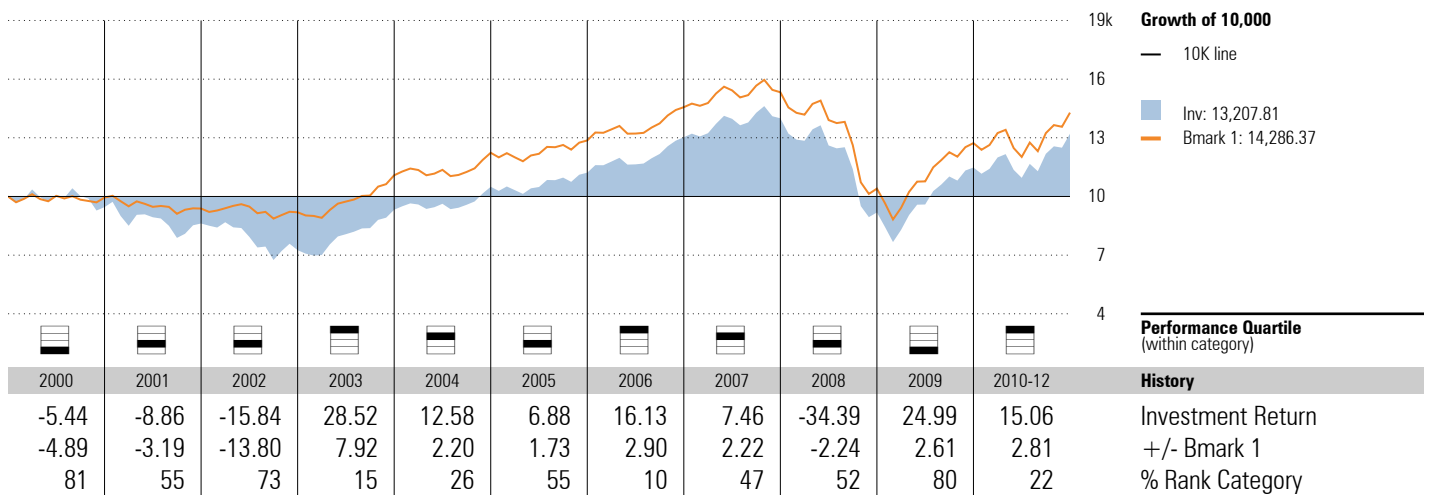
Avg Eff Duration	4.78	Avg Wtd Coupon	4.58
Avg Eff Maturity	6.60	Avg Wtd Price	118.71
Avg Credit Quality	AA		

Historical Equity Sectors 2000-10-31 to 2010-09-30



	Most Recent %		Average %	
	Subject	B1	Subject	B1
Hardware	8.5	—	9.6	—
Software	4.0	—	4.2	—
Media	2.8	—	3.5	—
Telecom	6.3	—	5.0	—
Health Care	11.0	—	12.0	—
Cons Svcs	7.8	—	7.8	—
Bus Svcs	3.8	—	4.3	—
Financial	17.6	—	19.9	—
Cons Goods	10.8	—	9.5	—
Materials	13.2	—	11.8	—
Energy	10.5	—	8.8	—
Utilities	3.8	—	3.6	—

Investment Growth as of 12/31/2010



Vanguard Total Bond Market Index Inv VBMFX

Currency
USD

Morningstar Category
US OE Intermediate-Term Bond

Benchmark 1
BarCap US Agg Bond TR USD

Morningstar Fixed Income Style BoxSM as of 9/30/2010

		Avg Eff Duration	4.79
		Avg Eff Maturity	6.60
		Avg Credit Quality	AA
		Avg Wtd Coupon	4.55
		Avg Wtd Price	109.89
Ltd	Mod	Ext	

Credit Analysis: % Bonds as of 9/30/2010

AAA	75.87	BB	0.00
AA	4.51	B	0.00
A	10.54	Below B	0.00
BBB	9.08	NR/NA	0.00

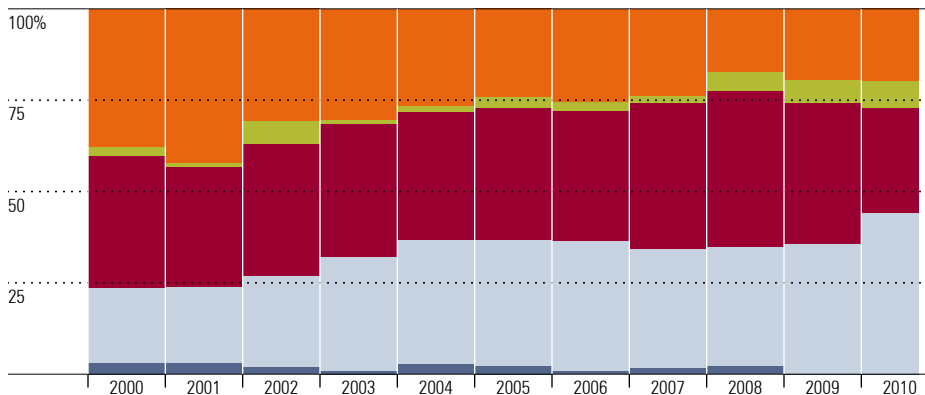
Maturity Breakdown: % Bonds as of 9/30/2010

1-3	19.69	10-14	4.94
3-5	15.98	15-19	2.16
5-6	10.67	20-29	30.48
7-9	13.69	30+	2.40

Top 10 Holdings as of 9/30/2010

	% Weighting
CMT Market Liquidity Rate	2.95
US Treasury Note 1.875%	0.89
US Treasury Note 0.875%	0.85
US Treasury Note 0.75%	0.83
US Treasury Note 0.75%	0.82
US Treasury Bond 6.25%	0.77
US Treasury Note 1.375%	0.75
GNMA	0.74
US Treasury Note 2.625%	0.71
US Treasury Note 2.75%	0.69
Total Number of Stock Holdings	0
Total Number of Bond Holdings	13812
Total Number of Holdings	13985
Share Class Net Assets (mil)	22,204

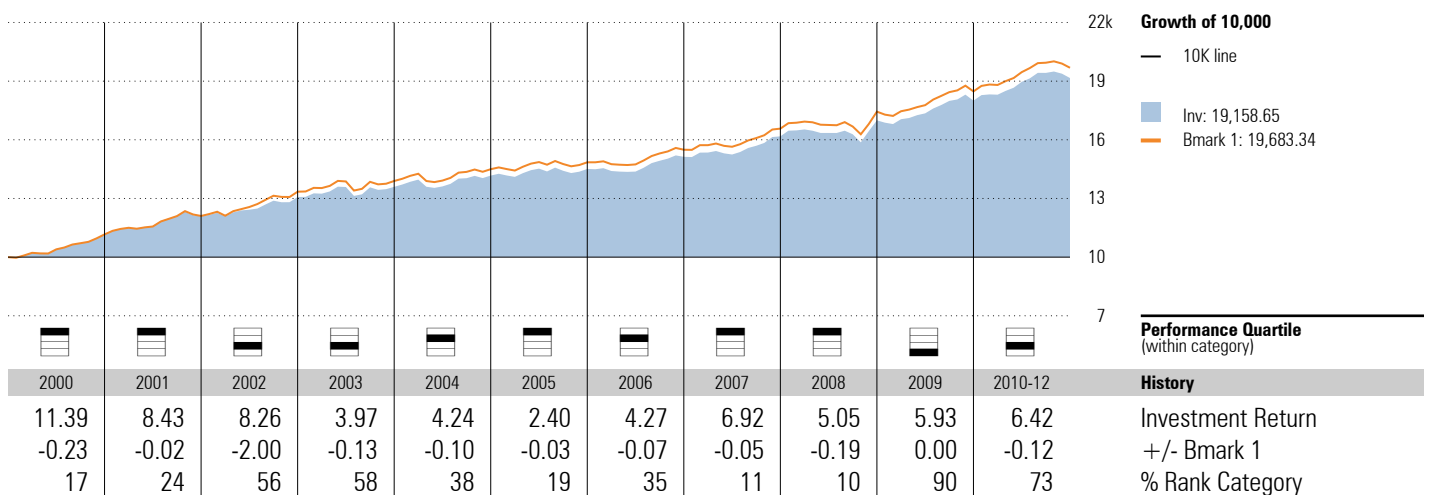
Sector Allocation History as of 9/30/2010



Fixed Income Sectors as of 2010-09-30

	% Inv	% Category
US Credit	19.78	32.43
Non-US Credit	7.15	8.82
Mortgage	28.76	28.20
US Government	44.31	30.55
Cash	—	—

Investment Growth as of 12/31/2010



Vanguard Balanced Index Inv VBINX

Currency: USD
 Morningstar Category: US OE Moderate Allocation

Benchmark 1
 60% S&P 500-40% BarCap Agg

Equity Style Summary as of 9/30/2010

23.82	24.58	23.21	Log	Market Cap	%
6.38	6.78	6.64	Mid	Giant	40.93
2.80	2.85	2.95	Sm	Large	30.53
				Mid	19.86
				Small	6.46
				Micro	2.23
Val	Core	Grth		Average Mkt Cap (mil)	24,245.55

Value Factors	%	Growth Factors	%
Price/Earnings	14.33	LT Earn Grth	10.09
Price/Book	1.97	Historical Earn Grth	-5.34
Price/Sales	1.22	Book Val Grth	-1.15
Price/Cash Flow	5.29	Sales Grth	-4.36
Dividend Yield	2.40	Cash Flow Grth	-1.24

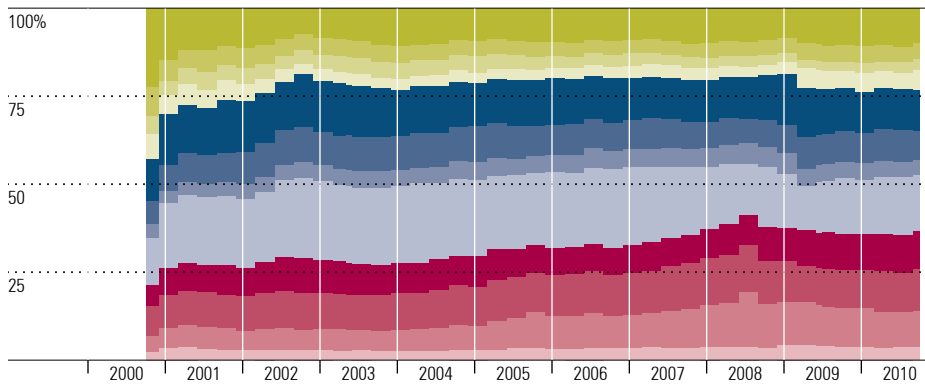
Morningstar Fixed Income Style BoxSM as of 9/30/2010



Fixed Income Statistics as of 9/30/2010

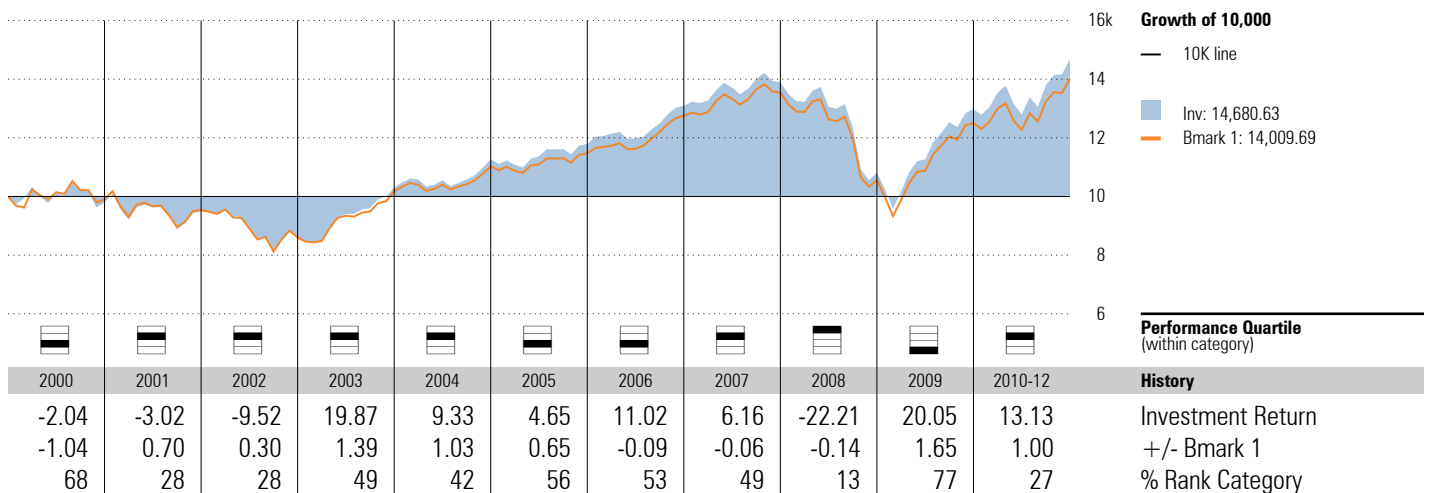
Avg Eff Duration	4.80	Avg Wtd Coupon	4.49
Avg Eff Maturity	6.70	Avg Wtd Price	109.66
Avg Credit Quality	AA		

Historical Equity Sectors 2000-10-31 to 2010-09-30



Sector	Most Recent %		Average %	
	Subject	B1	Subject	B1
Hardware	9.9	10.9	10.0	8.9
Software	4.5	4.4	4.6	4.8
Media	3.0	3.1	3.7	3.0
Telecom	5.5	5.3	3.9	6.4
Health Care	11.7	11.4	13.0	13.2
Cons Svcs	8.5	8.5	8.8	8.6
Bus Svcs	4.1	3.1	4.8	3.0
Financial	15.9	16.0	19.4	18.5
Cons Goods	10.8	11.4	8.7	9.4
Materials	11.8	11.4	11.1	11.6
Energy	10.5	11.0	8.7	9.3
Utilities	3.6	3.6	3.3	3.3

Investment Growth as of 12/31/2010



Vanguard 500 Index Investor VFINX

Currency
USD

Morningstar Category
US OE Large Blend

Benchmark 1
S&P 500 TR

Equity Style Summary as of 9/30/2010

29.33	30.33	27.87
4.53	4.44	3.28
0.08	0.14	0.02
Val	Core	Grth

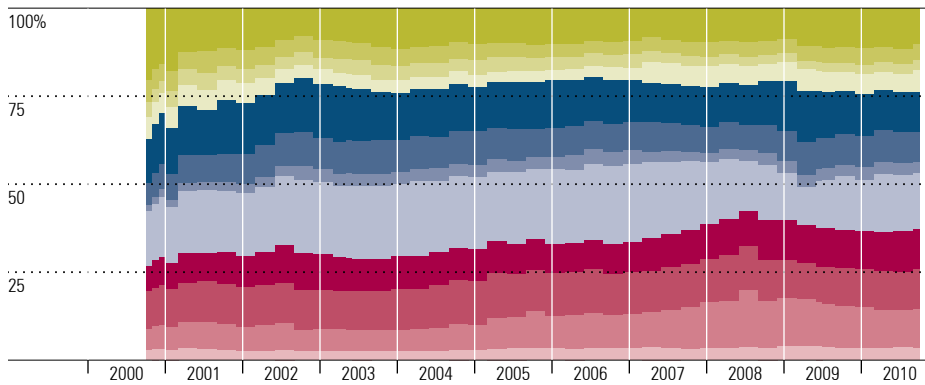
Market Cap	%
Giant	51.53
Large	35.95
Mid	12.30
Small	0.23
Micro	0.00
Average Mkt Cap (mil)	44,132.67

Value Factors	%	Growth Factors	%
Price/Earnings	14.07	LT Earn Grth	9.69
Price/Book	2.03	Historical Earn Grth	-5.55
Price/Sales	1.27	Book Val Grth	-0.95
Price/Cash Flow	5.45	Sales Grth	-2.39
Dividend Yield	2.40	Cash Flow Grth	-2.45

Top 10 Holdings as of 9/30/2010

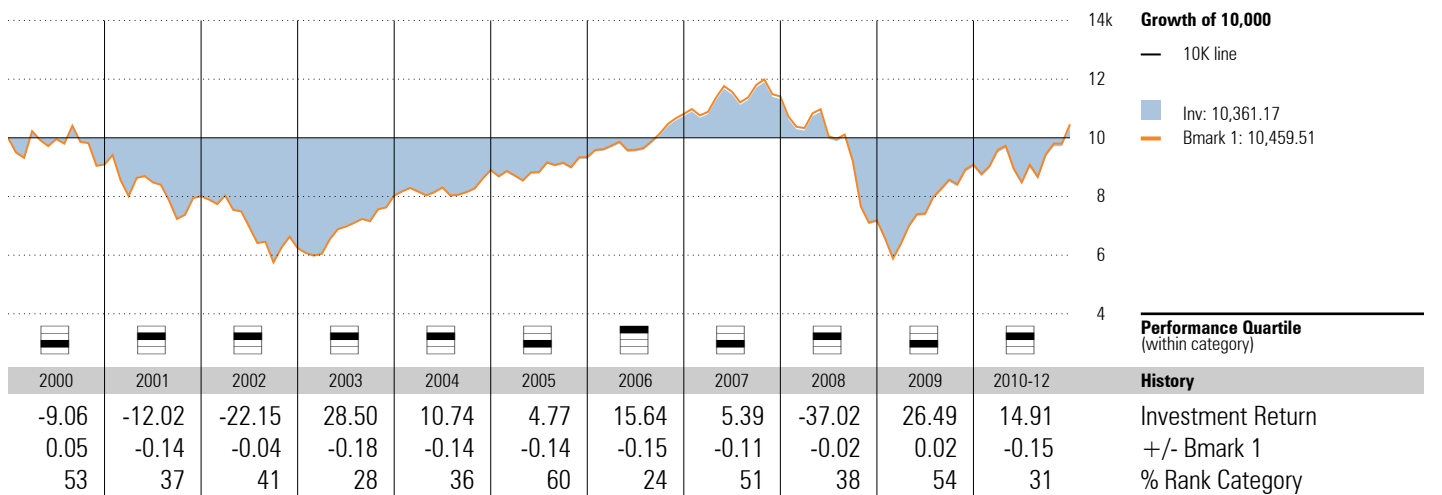
	% Weighting
ExxonMobil Corporation	3.04
Apple, Inc.	2.50
Microsoft Corporation	1.80
General Electric Company	1.68
Johnson & Johnson	1.65
Procter & Gamble Company	1.64
International Business Machines Corp	1.63
AT&T, Inc.	1.63
Chevron Corporation	1.57
J.P. Morgan Chase & Co.	1.46
Total Number of Stock Holdings	504
Total Number of Bond Holdings	—
Total Number of Holdings	506
Share Class Net Assets (mil)	47,989

Historical Equity Sectors 2000-10-31 to 2010-09-30



Sector	Most Recent %		Average %	
	Subject	B1	Subject	B1
Hardware	10.2	10.9	10.4	8.9
Software	4.4	4.4	4.5	4.8
Media	3.1	3.1	3.5	3.0
Telecom	6.0	5.3	4.6	6.4
Health Care	11.6	11.4	13.1	13.2
Cons Svcs	8.4	8.5	8.5	8.6
Bus Svcs	3.1	3.1	3.2	3.0
Financial	15.7	16.0	18.6	18.5
Cons Goods	11.4	11.4	9.5	9.4
Materials	11.4	11.4	11.6	11.6
Energy	11.0	11.0	9.3	9.3
Utilities	3.6	3.6	3.3	3.3

Investment Growth as of 12/31/2010



Vanguard Windsor II Investor VWNFX

Currency
USD

Morningstar Category
US OE Large Value

Benchmark 1
Russell 1000 Value TR USD

Equity Style Summary as of 9/30/2010

38.51	32.90	14.95
5.13	8.19	0.27
0.02	0.02	0.02
Val	Core	Grth

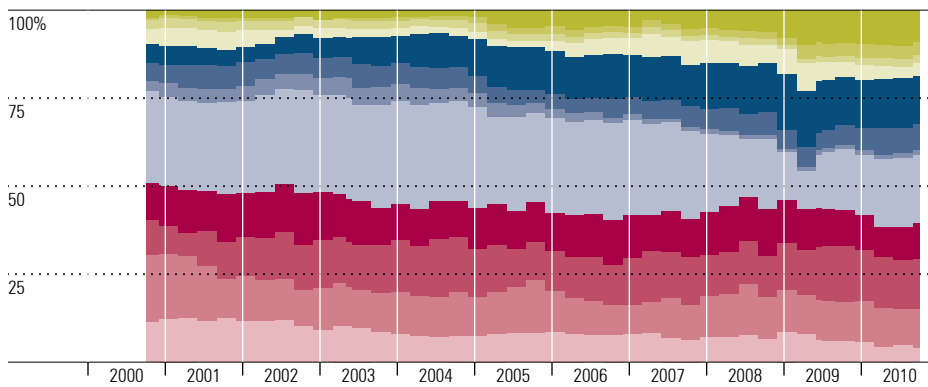
Market Cap	%
Giant	50.78
Large	35.49
Mid	13.68
Small	0.04
Micro	0.01
Average Mkt Cap (mil)	41,380.77

Value Factors	%	Growth Factors	%
Price/Earnings	12.32	LT Earn Grth	9.33
Price/Book	1.74	Historical Earn Grth	-5.99
Price/Sales	1.19	Book Val Grth	1.20
Price/Cash Flow	3.64	Sales Grth	-1.46
Dividend Yield	2.60	Cash Flow Grth	2.46

Top 10 Holdings as of 9/30/2010

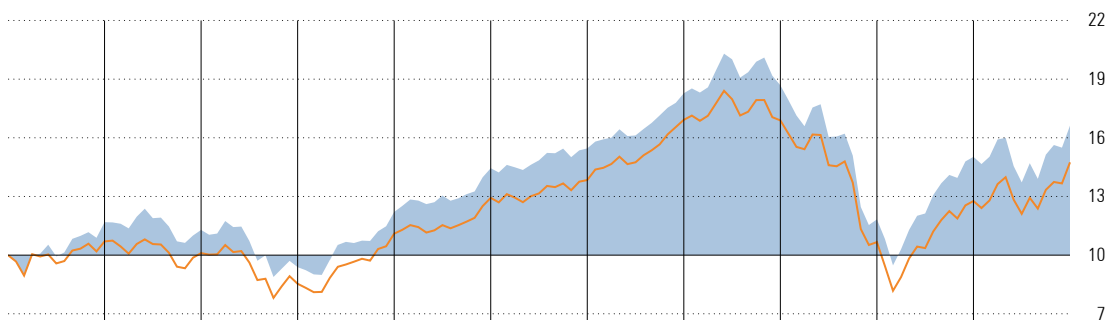
	% Weighting
International Business Machines Corp	3.42
ConocoPhillips	3.28
Pfizer Inc.	2.78
J.P. Morgan Chase & Co.	2.71
Wells Fargo Company	2.67
CMT Market Liquidity Rate	2.61
Microsoft Corporation	2.60
Bristol-Myers Squibb Company	2.45
Philip Morris International Inc	2.27
Raytheon Company	2.17
Total Number of Stock Holdings	241
Total Number of Bond Holdings	—
Total Number of Holdings	246
Share Class Net Assets (mil)	20,738

Historical Equity Sectors 2000-10-31 to 2010-09-30



Subject	Most Recent %		Average %	
	Subject	B1	Subject	B1
Hardware	8.9	1.8	4.4	2.7
Software	3.8	1.8	1.7	1.3
Media	2.2	4.7	2.1	4.2
Telecom	3.6	6.5	4.1	7.1
Health Care	13.7	13.3	10.2	6.5
Cons Svcs	7.6	3.9	5.6	4.4
Bus Svcs	1.4	2.6	2.9	2.1
Financial	19.2	27.1	24.3	31.5
Cons Goods	10.4	10.3	11.7	9.5
Materials	14.0	9.5	12.7	11.0
Energy	11.0	11.3	11.9	13.4
Utilities	4.2	7.2	8.5	6.3

Investment Growth as of 12/31/2010



Growth of 10,000
— 10K line
■ Inv: 16,621.54
■ Bmark 1: 14,746.15

Year	2000	2001	2002	2003	2004	2005	2006	2007	2008	2009	2010-12	Performance Quartile (within category)
Investment Return	16.86	-3.40	-16.86	30.08	18.31	7.01	18.25	2.23	-36.70	27.05	10.62	Investment Return
+/- Bmark 1	9.85	2.19	-1.34	0.05	1.82	-0.04	-4.00	2.40	0.15	7.36	-4.89	+/- Bmark 1
% Rank Category	14	38	35	33	7	34	50	47	53	28	88	% Rank Category

Vanguard US Growth Inv VWUSX

Currency: USD
 Morningstar Category: US OE Large Growth

Benchmark 1
 Russell 1000 Growth TR USD

Equity Style Summary as of 9/30/2010

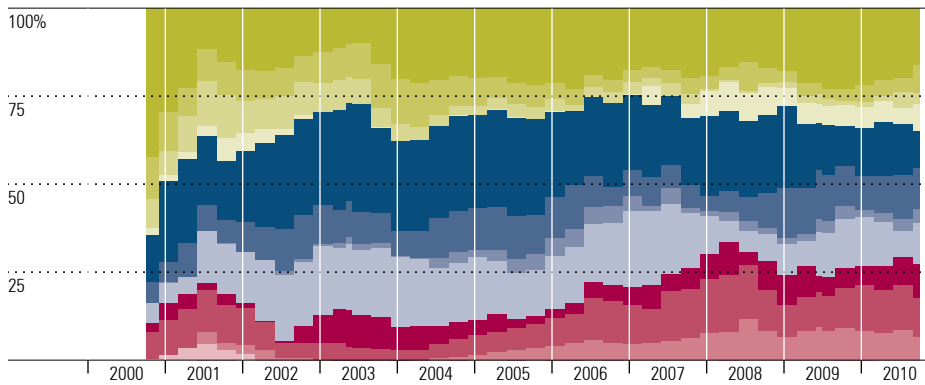
4.76	20.67	61.37	Ln	Market Cap	%
0.49	4.50	8.21	Mn	Giant	42.75
0.00	0.00	0.00	Sn	Large	44.04
				Mid	13.20
				Small	0.00
				Micro	0.00
Val	Core	Grth		Average Mkt Cap (mil)	35,442.93

Value Factors	%	Growth Factors	%
Price/Earnings	17.30	LT Earn Grth	13.39
Price/Book	2.69	Historical Earn Grth	0.48
Price/Sales	2.03	Book Val Grth	10.78
Price/Cash Flow	6.52	Sales Grth	-0.96
Dividend Yield	1.53	Cash Flow Grth	0.74

Top 10 Holdings as of 9/30/2010

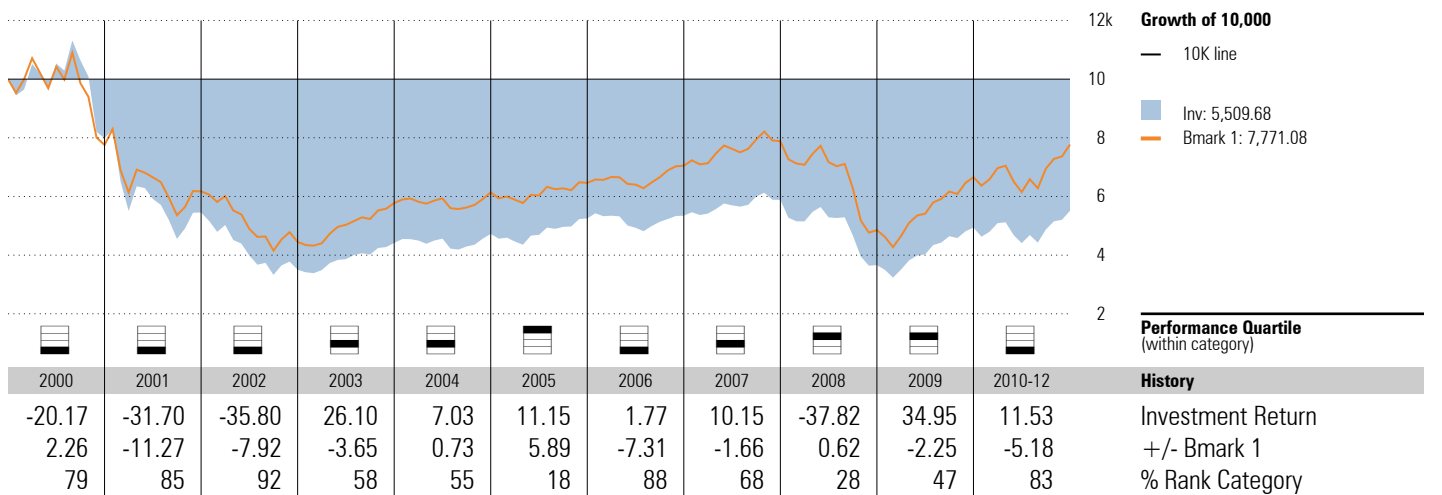
	% Weighting
Apple, Inc.	5.80
Google, Inc.	3.57
CMT Market Liquidity Rate	3.50
Qualcomm, Inc.	3.33
Microsoft Corporation	2.71
Schlumberger, Ltd.	2.46
EMC Corporation	2.09
Alcon, Inc.	2.06
Priceline.com, Inc.	1.98
eBay, Inc.	1.96
Total Number of Stock Holdings	126
Total Number of Bond Holdings	—
Total Number of Holdings	129
Share Class Net Assets (mil)	2,916

Historical Equity Sectors 2000-10-31 to 2010-09-30



Sector	Most Recent %		Average %	
	Subject	B1	Subject	B1
Hardware	16.0	19.2	19.0	15.8
Software	8.2	7.1	6.7	8.1
Media	3.1	1.8	4.6	2.5
Telecom	7.4	3.6	2.7	3.3
Health Care	10.7	9.6	22.2	19.4
Cons Svcs	11.5	13.0	9.6	12.7
Bus Svcs	4.1	4.7	2.2	4.7
Financial	11.6	5.4	14.3	7.5
Cons Goods	9.4	11.4	5.3	10.6
Materials	11.2	14.2	9.0	10.8
Energy	6.7	9.9	4.1	4.0
Utilities	0.0	0.1	0.4	0.8

Investment Growth as of 12/31/2010



Vanguard Mid Capitalization Index Inv VIMSX

Currency
USD

Morningstar Category
US OE Mid-Cap Blend

Benchmark 1
MSCI US Mid Cap 450 GR USD

Equity Style Summary as of 9/30/2010

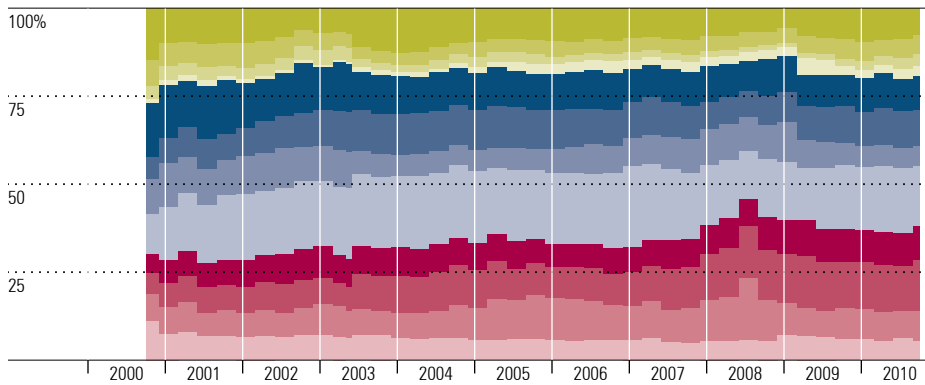
0.24	1.13	5.04	Val	Core	Grth	Market Cap	%
						Giant	0.00
						Large	6.37
30.78	30.97	30.74	Mid			Mid	92.54
						Small	1.09
						Micro	0.00
						Average Mkt Cap (mil)	5,348.35

Value Factors	%	Growth Factors	%
Price/Earnings	15.73	LT Earn Grth	10.97
Price/Book	1.91	Historical Earn Grth	-1.49
Price/Sales	1.06	Book Val Grth	-3.46
Price/Cash Flow	6.19	Sales Grth	-4.02
Dividend Yield	2.06	Cash Flow Grth	5.83

Top 10 Holdings as of 9/30/2010

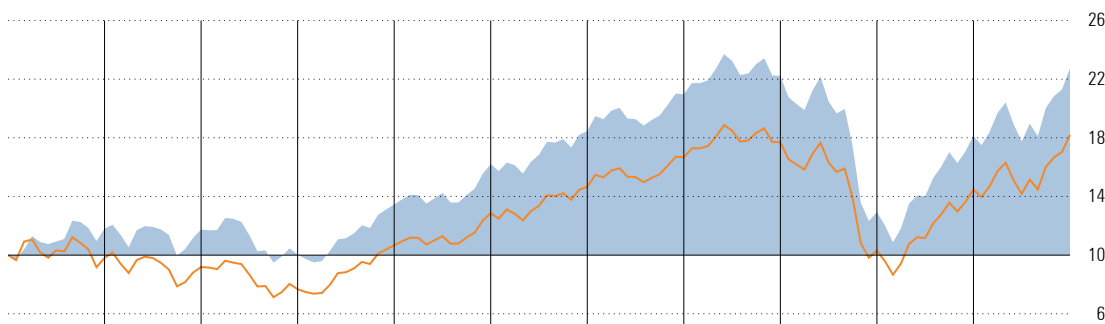
Company	% Weighting
Priceline.com, Inc.	0.78
Salesforce.com, Inc.	0.64
Citrix Systems, Inc.	0.62
Mead Johnson Nutrition Company	0.57
HCP, Inc.	0.52
Cameron International Corporation	0.52
Starwood Hotels & Resorts Worldwide, Inc.	0.49
Dover Corporation	0.48
Hospira, Inc.	0.47
Goodrich Corporation	0.45
Total Number of Stock Holdings	457
Total Number of Bond Holdings	—
Total Number of Holdings	459
Share Class Net Assets (mil)	7,607

Historical Equity Sectors 2000-10-31 to 2010-09-30



Sector	Most Recent %		Average %	
	Subject	B1	Subject	B1
Hardware	7.6	—	9.0	—
Software	5.2	—	4.6	—
Media	3.6	—	2.6	—
Telecom	2.6	—	2.0	—
Health Care	9.8	—	11.0	—
Cons Svcs	10.4	—	9.9	—
Bus Svcs	5.5	—	8.3	—
Financial	17.1	—	18.6	—
Cons Goods	9.8	—	8.0	—
Materials	14.5	—	10.4	—
Energy	8.4	—	9.2	—
Utilities	5.6	—	6.4	—

Investment Growth as of 12/31/2010



Growth of 10,000
— 10K line
Inv: 22,748.64
Bmark 1: 18,192.45

Year	2000	2001	2002	2003	2004	2005	2006	2007	2008	2009	2010-12
Investment Return	18.10	-0.50	-14.61	34.14	20.35	13.93	13.60	6.02	-41.82	40.22	25.46
+/- Bmark 1	19.95	5.88	1.85	-4.91	-0.17	-0.01	-0.15	-0.17	-0.02	-0.27	-0.23
% Rank Category	18	36	41	55	19	13	46	44	69	25	29

Performance Quartile
(within category)
History
Investment Return
+/- Bmark 1
% Rank Category

Vanguard Small Cap Index Inv NAESX

Currency
USD

Morningstar Category
US OE Small Blend

Benchmark 1

MSCI US Small Cap 1750 GR USD

Equity Style Summary as of 9/30/2010

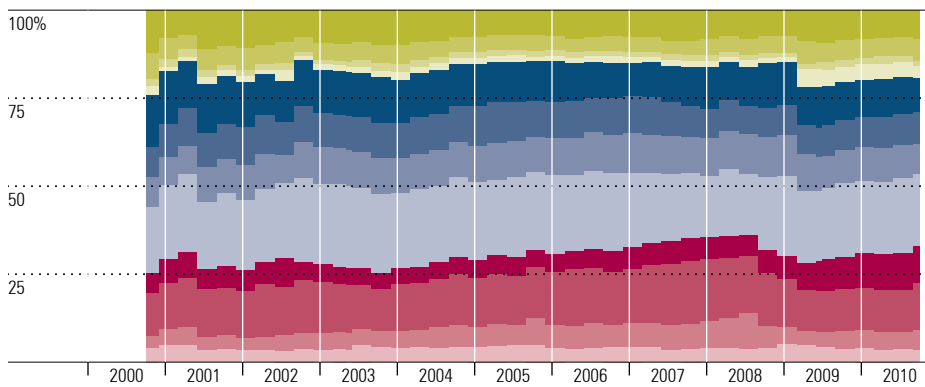
			Market Cap	%
0.00	0.00	0.00	Giant	0.00
5.60	9.17	13.49	Large	0.00
22.71	23.75	25.29	Mid	28.00
			Small	56.34
			Micro	15.67
			Average Mkt Cap (mil)	1,285.18

Value Factors	%	Growth Factors	%
Price/Earnings	16.72	LT Earn Grth	12.21
Price/Book	1.65	Historical Earn Grth	-4.98
Price/Sales	0.97	Book Val Grth	-4.32
Price/Cash Flow	5.43	Sales Grth	-10.70
Dividend Yield	2.43	Cash Flow Grth	1.96

Top 10 Holdings as of 9/30/2010

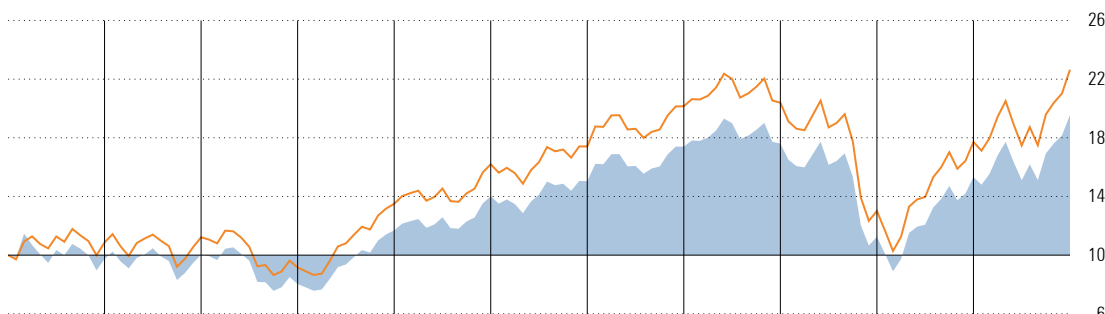
	% Weighting
CMT Market Liquidity Rate	0.34
Core Laboratories N.V.	0.28
Alexandria Real Estate Equities, Inc.	0.27
MSCI Inc	0.26
Atmel Corporation	0.26
Skyworks Solutions, Inc.	0.26
Jones Lang LaSalle, Inc.	0.26
Herbalife, Ltd.	0.25
Informatica Corporation	0.25
Phillips-Van Heusen Corporation	0.25
Total Number of Stock Holdings	1727
Total Number of Bond Holdings	—
Total Number of Holdings	1732
Share Class Net Assets (mil)	6,781

Historical Equity Sectors 2000-10-31 to 2010-09-30



	Most Recent %		Average %	
	Subject	B1	Subject	B1
Hardware	8.2	—	8.4	—
Software	6.1	—	4.9	—
Media	1.6	—	1.7	—
Telecom	3.3	—	2.2	—
Health Care	9.8	—	11.7	—
Cons Svcs	8.9	—	9.7	—
Bus Svcs	8.5	—	10.1	—
Financial	20.6	—	21.1	—
Cons Goods	10.4	—	6.3	—
Materials	13.2	—	14.2	—
Energy	5.7	—	5.6	—
Utilities	3.6	—	4.2	—

Investment Growth as of 12/31/2010



Growth of 10,000
— 10K line
Inv: 19,563.11
Bmark 1: 22,645.20

											Performance Quartile (within category)
											History
2000	2001	2002	2003	2004	2005	2006	2007	2008	2009	2010-12	Investment Return
-2.67	3.10	-20.02	45.63	19.90	7.36	15.66	1.16	-36.07	36.12	27.72	+/- Bmark 1
-11.34	-0.12	-1.66	-1.76	-0.11	-0.12	-0.11	-0.05	0.13	-0.03	-0.10	% Rank Category
85	73	71	36	43	42	42	30	53	26	25	

Vanguard International Growth Inv VWIGX

Currency: USD
 Morningstar Category: US OE Foreign Large Blend

Benchmark 1
 MSCI AC World Ex USA NR USD

Equity Style Summary as of 9/30/2010

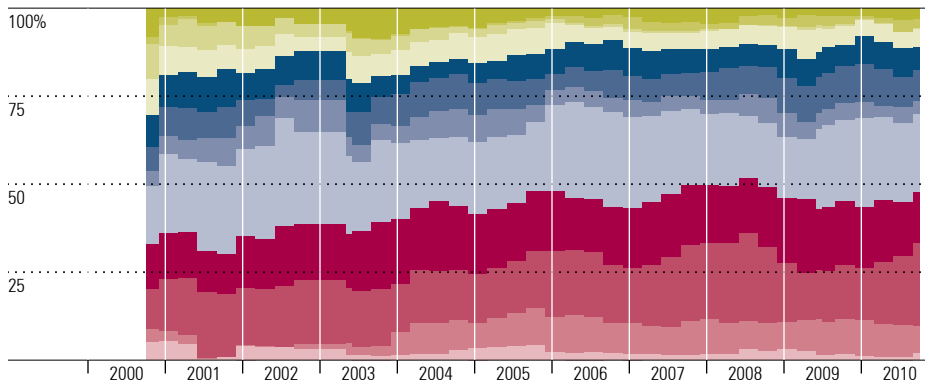
			Ulg	Market Cap	%
19.40	26.19	43.64		Giant	58.14
3.60	2.79	4.15	Mid	Large	31.34
0.23	0.00	0.00	Sm	Mid	10.30
				Small	0.23
				Micro	0.00
Val	Core	Grth		Average Mkt Cap (mil)	27,842.37

Region Exposure as of 9/30/2010

	%	
Greater Asia	36.12	
Japan	11.93	
Australasia	4.59	
Asia Developed	7.29	
Asia Emerging	12.31	
Americas	9.98	
North America	1.57	
Latin America	8.40	
Greater Europe	53.89	
United Kingdom	17.59	
Europe Developed	32.89	
Europe Emerging	1.50	
Africa/Middle East	1.92	

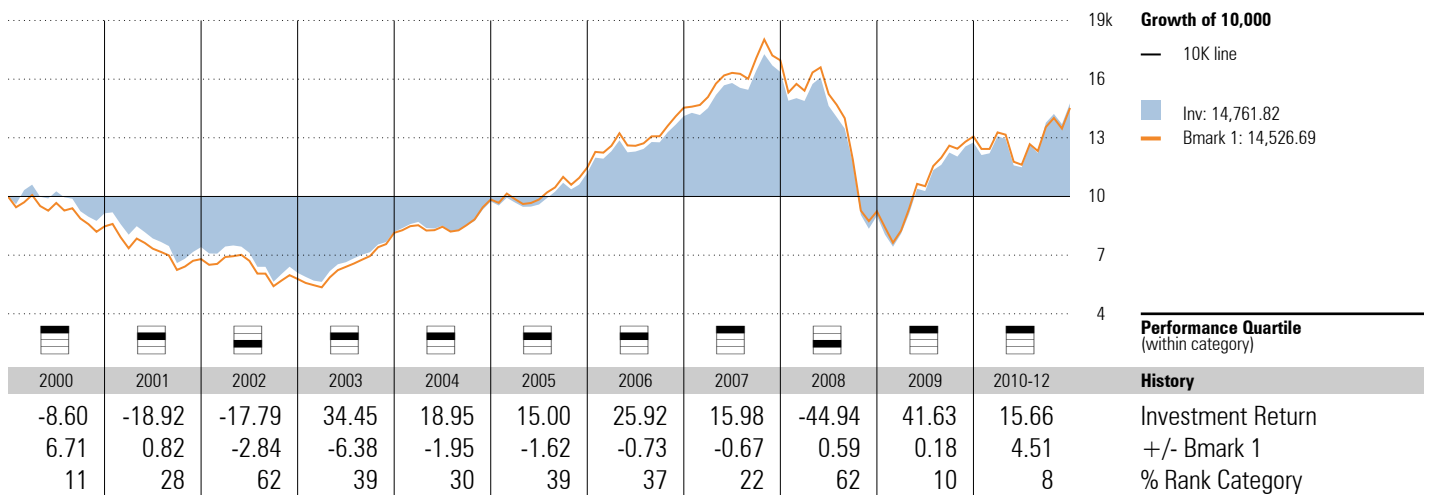
Value Factors	%	Growth Factors	%
Price/Earnings	14.03	LT Earn Grth	12.46
Price/Book	1.94	Historical Earn Grth	-5.98
Price/Sales	1.02	Book Val Grth	-18.38
Price/Cash Flow	5.76	Sales Grth	-9.02
Dividend Yield	2.55	Cash Flow Grth	2.66

Historical Equity Sectors 2000-10-31 to 2010-09-30



	Most Recent %		Average %	
	Subject	B1	Subject	B1
Hardware	2.9	—	3.8	—
Software	2.8	—	1.4	—
Media	0.3	—	2.5	—
Telecom	5.0	—	6.1	—
Health Care	6.8	—	7.3	—
Cons Svcs	8.8	—	8.0	—
Bus Svcs	3.6	—	5.7	—
Financial	22.3	—	22.5	—
Cons Goods	14.4	—	16.4	—
Materials	23.5	—	17.1	—
Energy	7.9	—	6.5	—
Utilities	1.9	—	2.6	—

Investment Growth as of 12/31/2010



Appendix

- NEPC uses, as a data source, the plan's custodian bank or service provider for asset balances, calculation of accruals, transfers, exchanges and contribution deferral information. While NEPC has exercised reasonable professional care in preparing this report, we cannot guarantee the accuracy of all source information contained within.
- This report is provided as a management aid for the client's internal use only. Fund performance contained in this report does not constitute a recommendation by NEPC.
- Information in this report on fund returns, market indices and security characteristics is received from sources external to NEPC. While efforts are made to ensure that this external data is accurate, NEPC cannot accept responsibility for errors that may occur.
- (c) Morningstar 2008. All rights reserved. Use of this content requires expert knowledge. It is to be used by specialist institutions only. The information contained herein: (1) is proprietary to Morningstar and/or its content providers; (2) may not be copied, adapted or distributed; and (3) is not warranted to be accurate, complete or timely. Neither Morningstar nor its content providers are responsible for any damages or losses arising from any use of this information, except where such damages or losses cannot be limited or excluded by law in your jurisdiction. Past financial performance is no guarantee of future results.